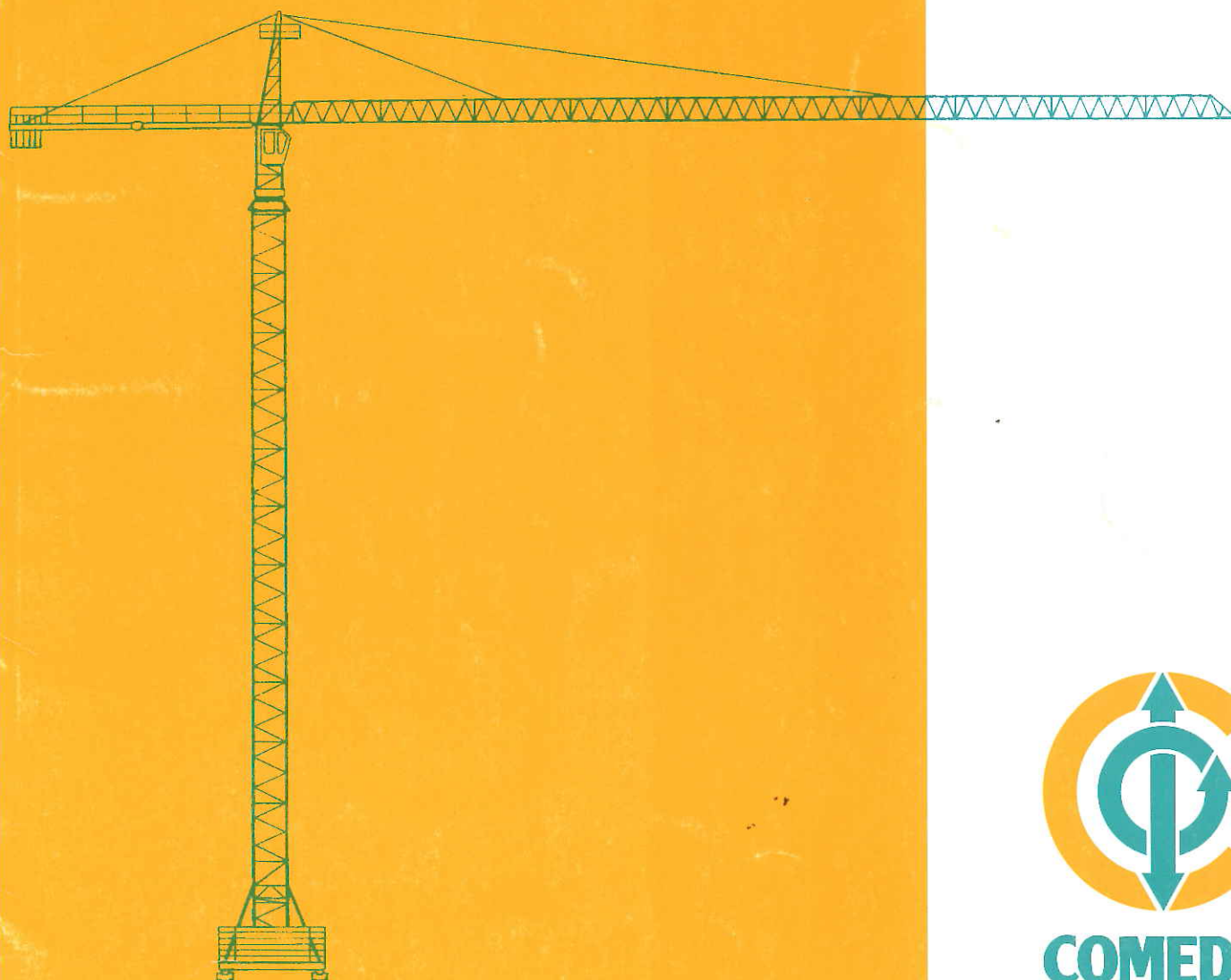


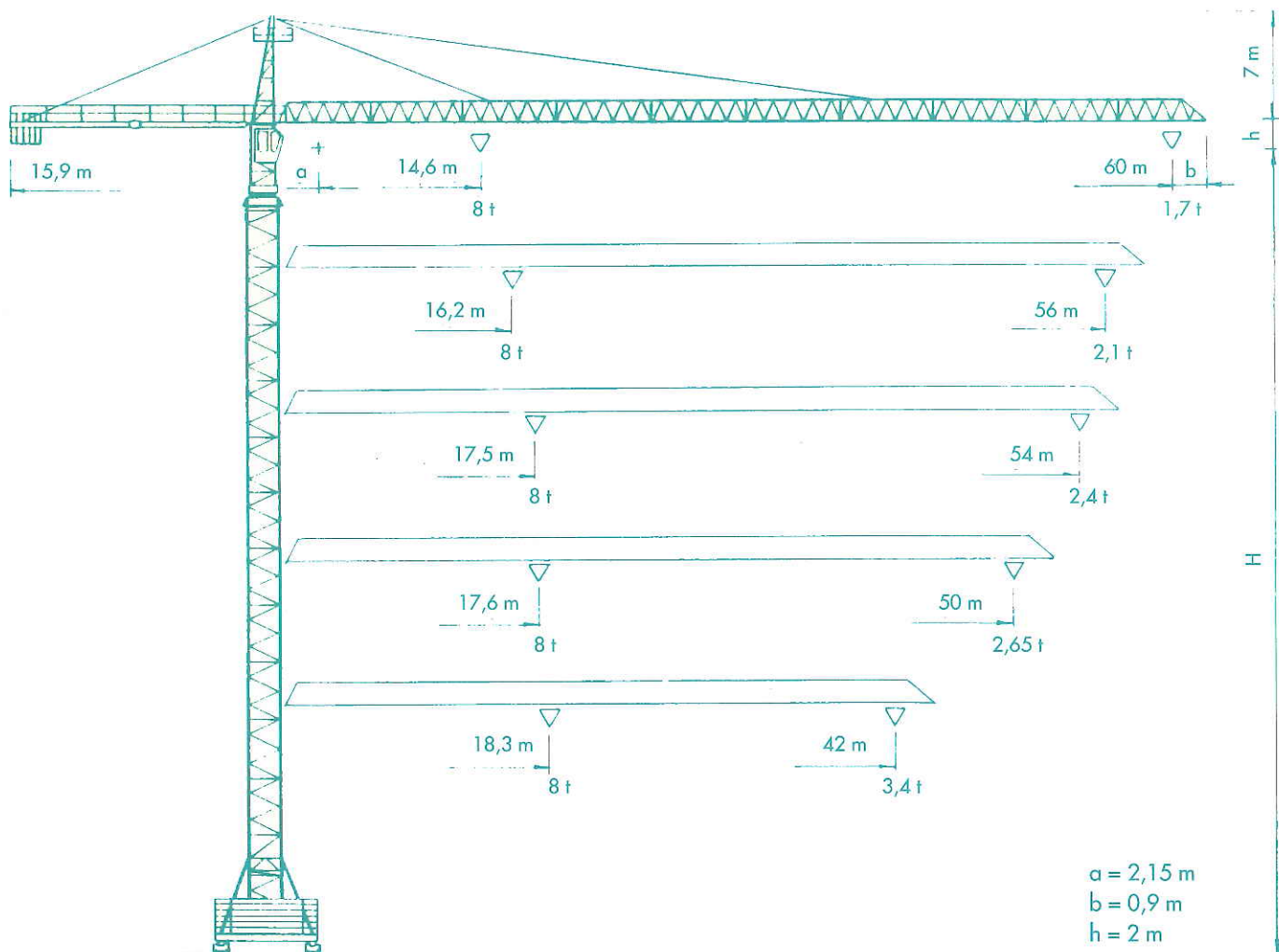
**Gru a torre  
Sistema modulare  
Giunzione a spine**

***Tower crane  
Modular system  
Pin connection***



# CT 602



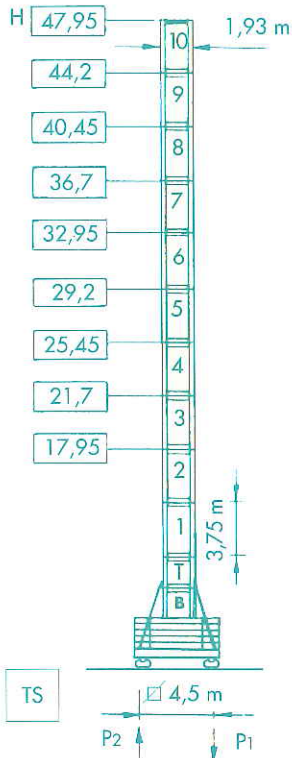


**Sbracci e portate - Radius and capacity** m

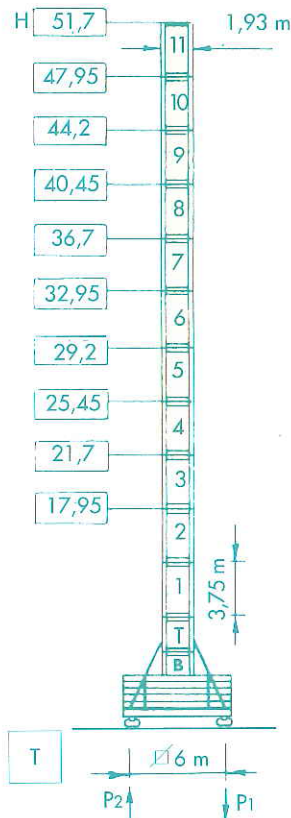
10	15	18	21	24	27	30	33	36	39	42	45	50	52	54	56	60
----	----	----	----	----	----	----	----	----	----	----	----	----	----	----	----	----

		t																
4 t. ÷ 29 m	(II)	4	4	4	4	4	4	3,86	3,46	3,14	2,86	2,62	2,42	2,13	2,03	1,94	1,85	1,7
8 t. ÷ 14,6 m	(IV)	8	7,81	6,37	5,34	4,57	3,97	3,49	3,09	2,77	2,49	2,25	2,05	1,76	1,66	1,57	1,48	1,33
4 t. ÷ 32,1 m	(II)	4	4	4	4	4	4	4	3,88	3,52	3,21	2,95	2,72	2,4	2,29	2,19	2,1	
8 t. ÷ 16,2 m	(IV)	8	8	7,13	5,99	5,14	4,48	3,94	3,51	3,15	2,84	2,58	2,35	2,05	1,92	1,82	1,73	
4 t. ÷ 34,6 m	(II)	4	4	4	4	4	4	4	4	3,83	3,54	3,21	2,97	2,62	2,51	2,4		
8 t. ÷ 17,5 m	(IV)	8	8	7,75	6,52	5,6	4,89	4,31	3,85	3,46	3,13	2,84	2,6	2,25	2,14	2,03		
4 t. ÷ 34,8 m	(II)	4	4	4	4	4	4	4	4	3,85	3,52	3,24	2,99	2,65				
8 t. ÷ 17,6 m	(IV)	8	8	7,8	6,57	5,64	4,92	4,35	3,88	3,48	3,15	2,87	2,62	2,28				
4 t. ÷ 36,3 m	(II)	4	4	4	4	4	4	4	4	3,69	3,4							
8 t. ÷ 18,3 m	(IV)	8	8	8	6,89	5,92	5,17	4,57	4,08	3,67	3,32	3,03						

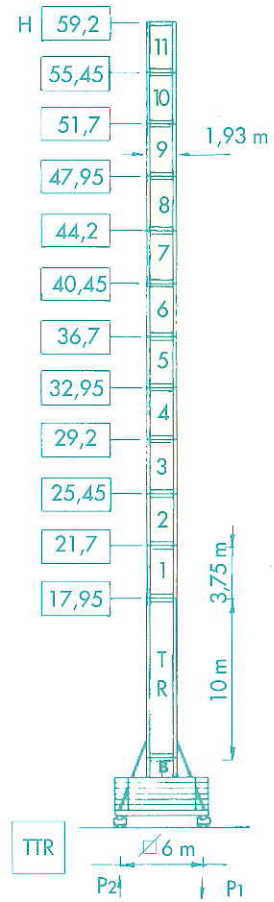
## S20



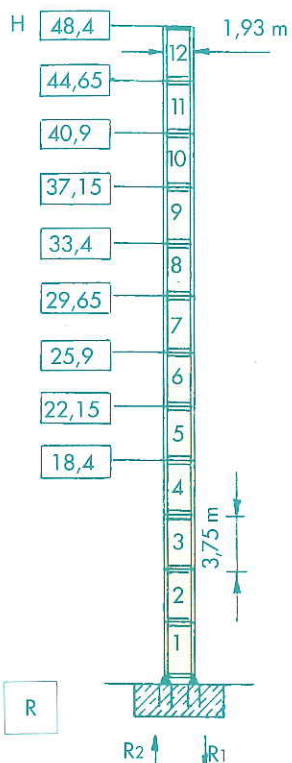
P1	78 t*	90,4 t*
P2		16,4 t*
	48 t	



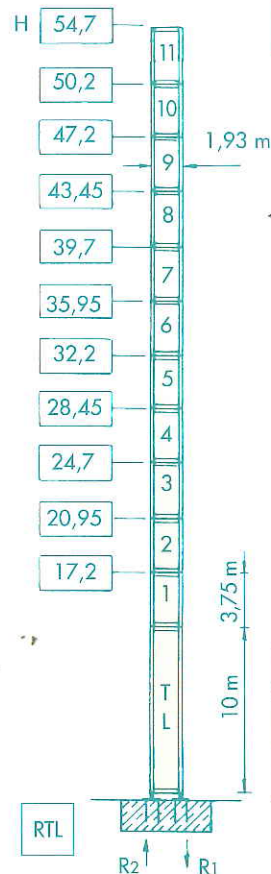
P1	71,7 t*	85,1 t*
	51,3 t	



P1	75,9 t*	99,9 t*
P2		19,6 t*
	54,3 t	

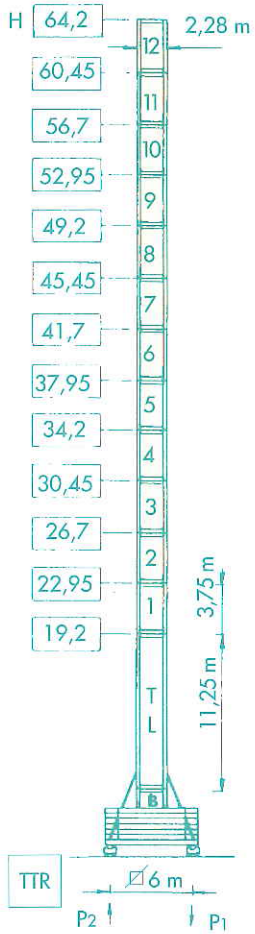


R1	107,8 t*	146,4 t*
R2	73,3 t*	113 t*
	42,5 t	



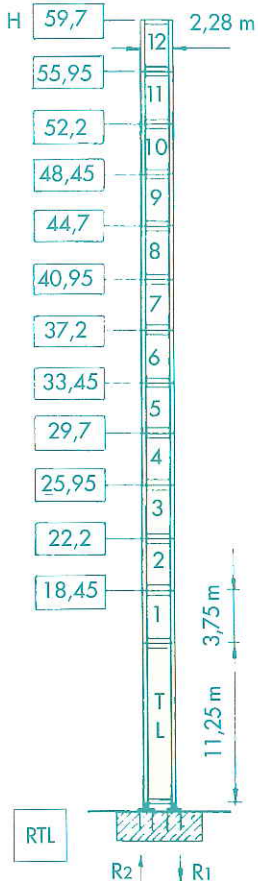
R1	117,5 t*	183,7 t*
R2	81,3 t*	148,7 t*
	45,5 t	





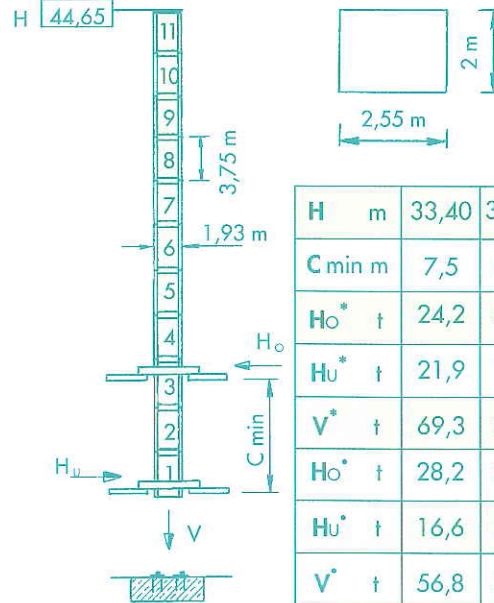
## S23

P <sub>1</sub>	96,5 t*	127,9 t*
P <sub>2</sub>		27,5 t*
	63 t	



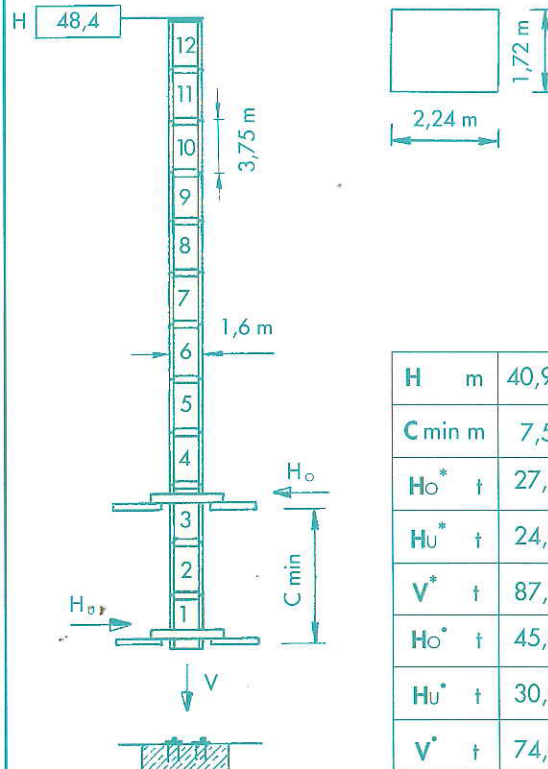
R <sub>1</sub>	111 t*	194 t*
R <sub>2</sub>	69 t*	154 t*
	52 t	

## CLIMBING S20

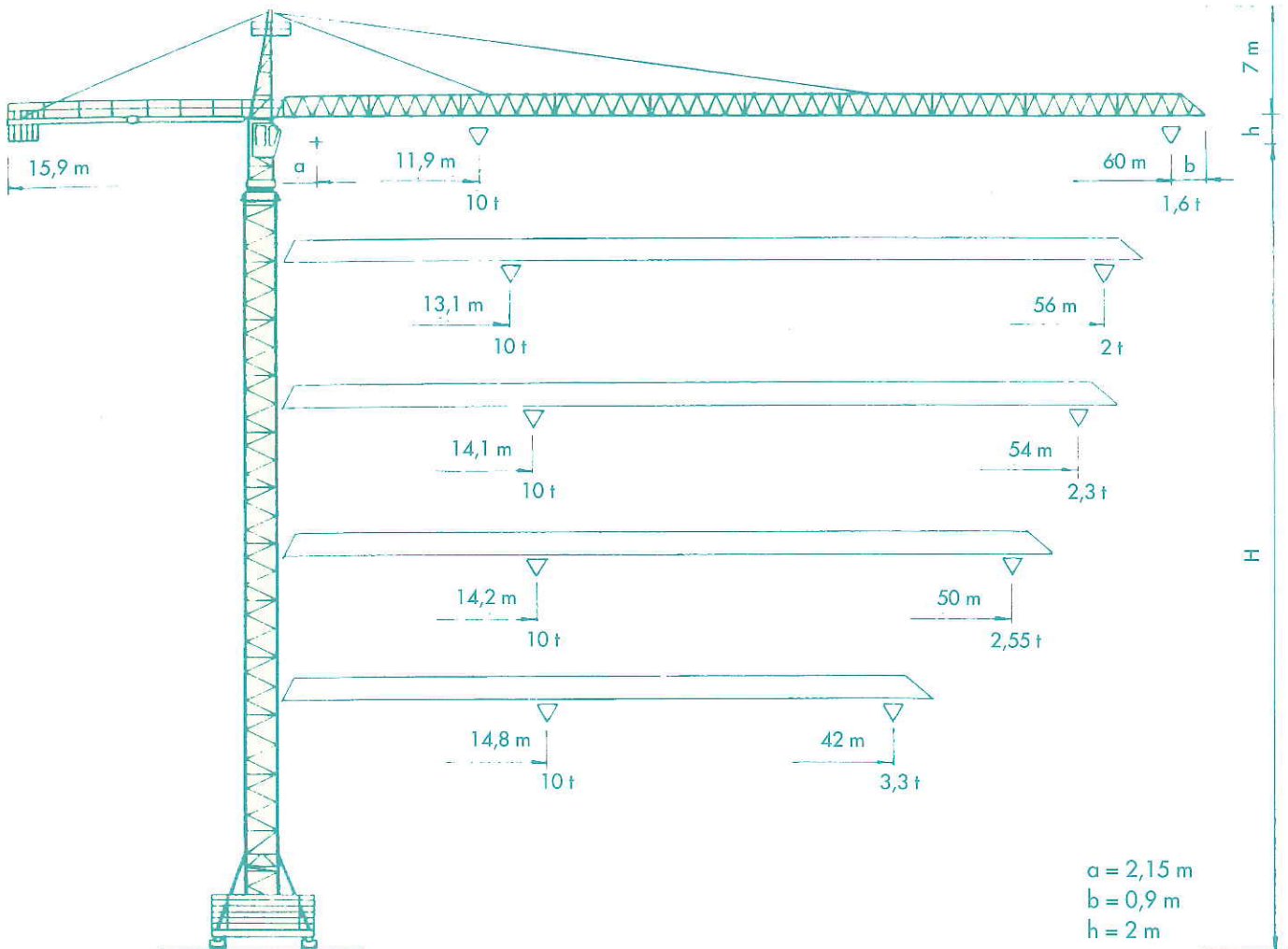


H m	33,40	37,15	40,90	44,65
C min m	7,5	8,5	9,5	11,0
H <sub>0</sub> * t	24,2	22,4	18,2	19,1
H <sub>u</sub> * t	21,9	19,9	15,5	16,3
V* t	69,3	70,9	72,5	74,1
H <sub>0</sub> ' t	28,2	30,0	27,5	32,0
H <sub>u</sub> ' t	16,6	17,7	14,4	18,1
V' t	56,8	58,4	60,0	61,6

## H16



H m	40,90	44,65	48,40
C min m	7,5	8,0	9,0
H <sub>0</sub> * t	27,7	27,4	25,7
H <sub>u</sub> * t	24,7	24,2	22,3
V* t	87,3	89,9	92,5
H <sub>0</sub> ' t	45,8	50,2	51,5
H <sub>u</sub> ' t	30,6	34,1	34,4
V' t	74,8	77,4	80,0



### Sbracci e portate - Radius and capacity










		m																
		10	15	18	21	24	27	30	33	36	39	42	45	50	52	54	56	60
5 t ÷ 23,6 m	(III)	5	5	5	5	4,91	4,29	3,8	3,4	3,07	2,78	2,54	2,33	2,04	1,94	1,84	1,75	1,6
10 t ÷ 11,9 m	(IV)	10	7,76	6,29	5,23	4,45	3,83	3,34	2,94	2,61	2,32	2,08	1,87	1,58	1,48	1,38	1,29	1,14
5 t ÷ 26 m	(II)	5	5	5	5	5	4,8	4,25	3,81	3,44	3,13	2,86	2,63	2,31	2,2	2,09	2	
10 t ÷ 13,1 m	(IV)	10	8,66	7,04	5,88	5,01	4,34	3,79	3,35	2,98	2,67	2,4	2,17	1,85	1,74	1,63	1,54	
5 t ÷ 27,9 m	(II)	5	5	5	5	5	5	4,62	4,15	3,75	3,41	3,13	2,88	2,53	2,41	2,3		
10 t ÷ 14,1 m	(IV)	10	9,39	7,65	6,4	5,47	4,74	4,15	3,69	3,29	2,95	2,67	2,42	2,07	1,95	1,84		
5 t ÷ 28,1 m	(II)	5	5	5	5	5	5	4,65	4,17	3,77	3,44	3,15	2,9	2,55				
10 t ÷ 14,2 m	(IV)	10	9,45	7,7	6,45	5,51	4,77	4,19	3,71	3,31	2,98	2,69	2,44	2,09				
5 t ÷ 29,2 m	(II)	5	5	5	5	5	5	4,86	4,36	3,95	3,6	3,3						
10 t ÷ 14,8 m	(IV)	10	9,87	8,04	6,74	5,77	5,01	4,4	3,9	3,49	3,14	2,84						




Potenza totale richiesta Necessary power supply
*50 KVA
*60 KVA
*53 KVA
*65 KVA

Argani Winches
AE 33
AE 40
AWL-R 404
AWL-R 505

Corrente trifase Three-phase current
400V - 50 Hz
400V - 50 Hz
400V - 50 Hz
400V - 50 Hz

\* Gru senza traslazione - Crane without travelling system

Argani - Hoist winches		m/min	t	HP	kW		
AE 33		7,5	4	33	24,3	440 m max	
		30	4				
		60	2				
		3,8	8				
		15	8				
		30	4				
AE 40		7,5	5	40	29		> 440 m
		30	5				
		60	2,5				
		3,8	10				
		15	10				
		30	5				
AWL-R 404		0 → 36	4	40	29	440 m max	
		0 → 45	3,2				
		0 → 60	2,4				
		0 → 90	1,6				
		0 → 18	8				
		0 → 22,5	6,4				
		0 → 30	4,8				
		0 → 45	3,2				
AWL-R 505		0 → 40	5	50	37		> 440 m
		0 → 50	4				
		0 → 66	3				
		0 → 100	2				
		0 → 20	10				
		0 → 25	8				
		0 → 33	6				
		0 → 50	4				

Carrello - Trolley		C3V	0-10-30-60 m/min	5/4 daNm	3,6 kW
Rotazione - Slewing		RVP	0 ± 0,8 r.p.m.	2 x 5 daNm	2 x 3,6 kW
Traslazione - Travelling	 $R \geq 12m$	2RP 2M4	0-24 m/min	2 x 5,5 HP	2 x 4 kW



Gru Comedil srl  
Via S. Egidio 42/A - 33074 Fontanafredda (PN) - Italy  
Tel. 0434/997580 - Telefax 0434/998631

Casagrande Group

In accordo con le normative C.E.E. 87/405 riguardanti il livello acustico.  
In accordance with C.E.E. standards 87/405 for the acoustic level.

