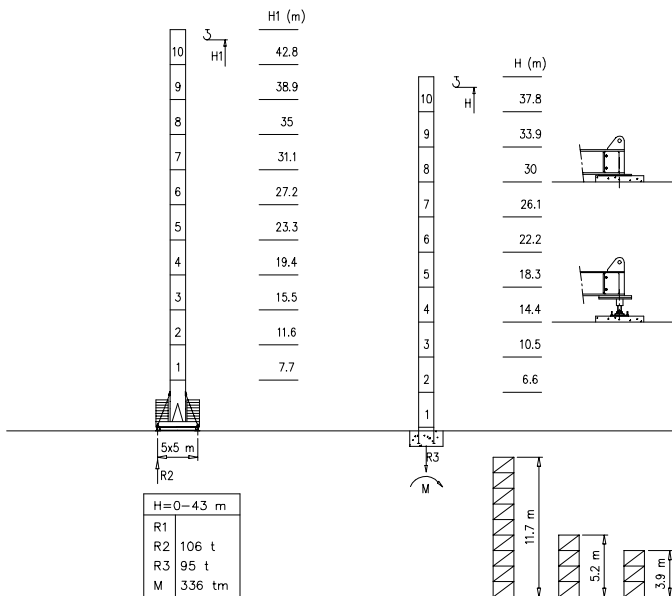


- S1700 - 1.70x1.70 m
- S2050 - 2.05x2.05 m

S1700

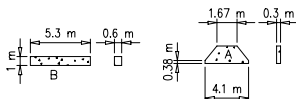
45 m \rightarrow 65 m



Peso zavorra - Ballast weight - Poids du lest - Ballastgewicht - Peso de lastre



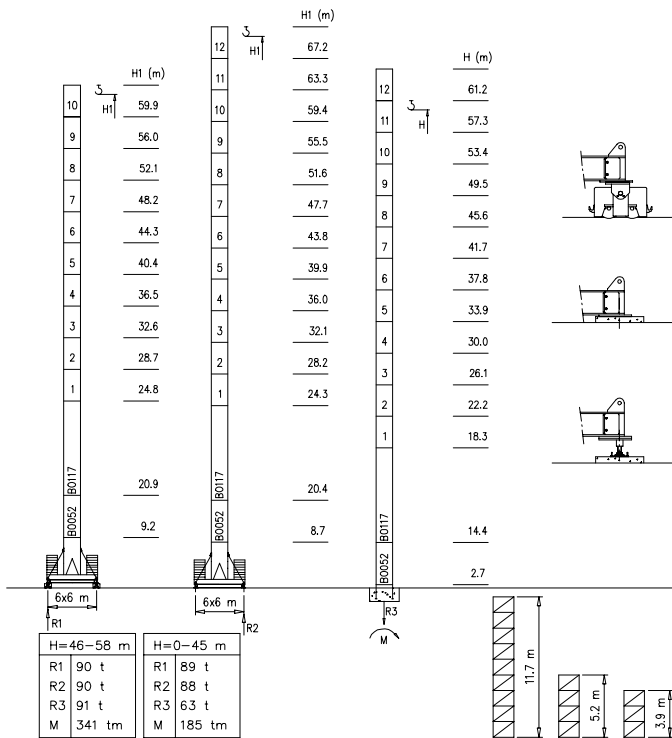
| H | n° | Tot. |
|--------|--------|-----------|
| 0-43 m | 2C+32D | 105000 kg |



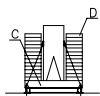
Torre/Reazioni - Masts/Reactions - Mat/Réactions - Maste/Eckdrücke - Mástil/Reacciones - Tramo/Reações

S2050

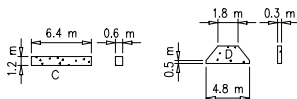
45 m → 65 m



Peso zavorra - Ballast weight - Poids du lest - Ballastgewicht - Peso de lastre



| H | n* | Tot. |
|---------|---------|-----------|
| 0-55 m | 2C+ 16D | 102320 kg |
| 56-67 m | 2C+ 18D | 112610 kg |



Curve di carico - Courbes de charges - Load diagrams - LastKurven - Curvas de cargas

Pmax 5000 kg

| | | | | | | | | | | | | | | | | | | | | |
|--|----------|------|------|------|------|------|------|------|------|------|------|------|------|------|------|------|------|------|------|----|
| | 28400 kg | 65 m | 3.5 | 35 | 36 | 38 | 40 | 42 | 44 | 46 | 48 | 50 | 52 | 54 | 56 | 58 | 60 | 62 | 65 | m |
| | | | 5000 | 5000 | 4900 | 4500 | 4200 | 3900 | 3700 | 3500 | 3400 | 3200 | 2900 | 2800 | 2700 | 2600 | 2100 | 1800 | 1700 | kg |
| | 28400 kg | 60 m | 3.5 | 35 | 36 | 38 | 40 | 42 | 44 | 46 | 48 | 50 | 52 | 54 | 56 | 58 | 60 | | | m |
| | | | 5000 | 5000 | 4900 | 4500 | 4200 | 3900 | 3700 | 3500 | 3400 | 3200 | 2900 | 2800 | 2700 | 2600 | 2500 | | | kg |
| | 25560 kg | 55 m | 3.5 | | | | 38 | 40 | 42 | 44 | 46 | 48 | 50 | 52 | 54 | 55 | | | | m |
| | | | 5000 | | | | 5000 | 4700 | 4400 | 4000 | 3800 | 3600 | 3500 | 3300 | 3200 | 3000 | | | | |
| | 22720 kg | 50 m | 3.5 | | | | 38 | 40 | 42 | 44 | 46 | 48 | 50 | | | | | | | m |
| | | | 5000 | | | | 5000 | 4700 | 4400 | 4000 | 3800 | 3600 | 3500 | | | | | | | |
| | 19880 kg | 45 m | 3.5 | | | | 38 | 40 | 42 | 44 | 45 | | | | | | | | | m |
| | | | 5000 | | | | 5000 | 4700 | 4400 | 4150 | 4000 | | | | | | | | | |

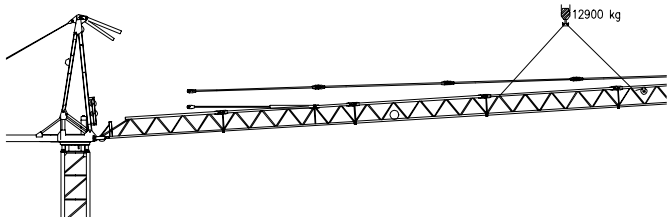
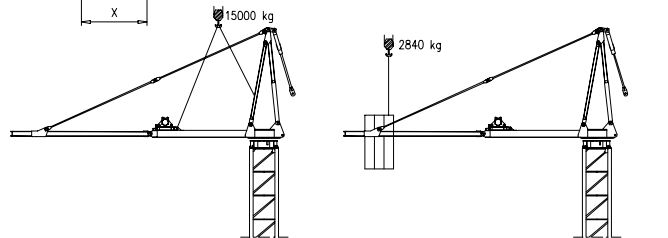
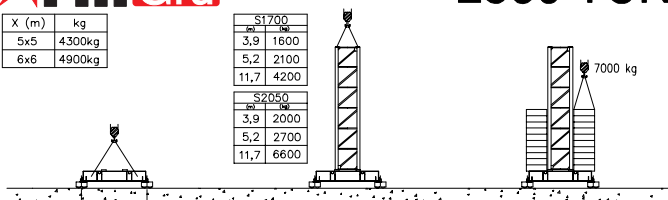
Pmax 10000/5000 kg

| | | | | | | | | | | | | | | | | | | | | | | | | | |
|--|----------|------|-------|------|------|------|------|------|------|------|------|------|------|------|------|------|------|------|------|------|------|------|------|----|---|
| | 28400 kg | 65 m | 3.5 | 20 | 22 | 26 | 30 | 32 | 34 | 36 | 38 | 40 | 42 | 44 | 46 | 48 | 50 | 52 | 54 | 56 | 58 | 60 | 62 | 65 | m |
| | | | 10000 | 8900 | 7400 | 6000 | 5600 | 5300 | 4900 | 4500 | 4200 | 3900 | 3700 | 3500 | 3400 | 3200 | 2900 | 2800 | 2700 | 2600 | 2100 | 1800 | 1700 | | |
| | 28400 kg | 60 m | 3.5 | 20 | 22 | 26 | 30 | 32 | 34 | 36 | 38 | 40 | 42 | 44 | 46 | 48 | 50 | 52 | 54 | 56 | 58 | 60 | | | m |
| | | | 10000 | 8900 | 7400 | 6000 | 5600 | 5300 | 4900 | 4500 | 4200 | 3900 | 3700 | 3500 | 3400 | 3200 | 2900 | 2800 | 2700 | 2600 | 2500 | | | | |
| | 25560 kg | 55 m | 3.5 | 20 | 22 | 26 | 30 | 32 | 34 | 36 | 38 | 40 | 42 | 44 | 46 | 48 | 50 | 52 | 54 | 55 | | | | | m |
| | | | 10000 | 9800 | 8200 | 7000 | 6300 | 5900 | 5500 | 5000 | 4700 | 4400 | 4000 | 3800 | 3600 | 3500 | 3300 | 3200 | 3000 | | | | | | |
| | 22720 kg | 50 m | 3.5 | 20 | 22 | 26 | 30 | 32 | 34 | 36 | 38 | 40 | 42 | 44 | 46 | 48 | 50 | | | | | | | | m |
| | | | 10000 | 9800 | 8200 | 7000 | 6300 | 5900 | 5500 | 5000 | 4700 | 4400 | 4000 | 3800 | 3600 | 3500 | | | | | | | | | |
| | 19880 kg | 45 m | 3.5 | 22 | 24 | 26 | 30 | 32 | 34 | 36 | 38 | 40 | 42 | 44 | 45 | | | | | | | | | | m |
| | | | 10000 | 9700 | 8950 | 7300 | 6800 | 6100 | 5700 | 5000 | 4700 | 4400 | 4150 | 4000 | | | | | | | | | | | |

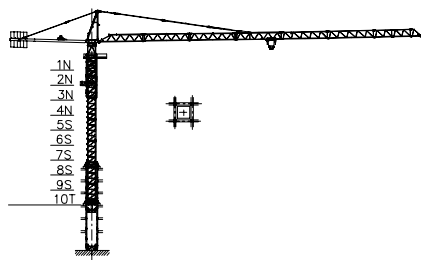
| X (m) | kg |
|-------|--------|
| 5x5 | 4300kg |
| 6x6 | 4900kg |

| S1700 | |
|-------|------|
| 3,9 | 1600 |
| 5,2 | 2100 |
| 11,7 | 4200 |

| S2050 | |
|-------|------|
| 3,9 | 2000 |
| 5,2 | 2700 |
| 11,7 | 6600 |



Gru in cavedito - Climbing crane - T elescopage sur dalles - Kletterkrane in Geb ude - Telescopage gruas trepadoras - Telescopagem sobre lajes



| Number of tower section | H (m.) |
|-------------------------|--------|
| 5S+2N+T | 33.40 |
| 5S+3N+T | 37.30 |
| 5S+4N+T | 41.20 |

N = Standard mast element
T = Telescopic element
S = Special mast element

Meccanismi – Mechanisms – Mécanismes – Antriebe – Mecanismos

| | | | | | | | |
|--|--------|---|----|-----------|------------------------------|-----------------------------------|---|
| Sollevamento V40.60 Hoisting Levage Heben Elevación Elevação | ▲ ▼ | | 1a | 2 m/min | 5000 kg | 30 kW | V40.60 54 kVA |
| | | | 2a | 20 m/min | 5000 kg | | |
| | | | 3a | 31 m/min | 4500 kg | | |
| | | | 4a | 46 m/min | 3000 kg | | |
| | | | 5a | 60 m/min | 2250 kg | | |
| | | | 1a | 1 m/min | 10000 kg | | |
| | | | 2a | 10 m/min | 10000 kg | | |
| | | | 3a | 15 m/min | 9000 kg | | |
| | | | 4a | 23 m/min | 6000 kg | | |
| | | | 5a | 30 m/min | 5000 kg | | |
| Sollevamento V60.100 Hoisting Levage Heben Elevación Elevação | ▲ ▼ | | 1a | 2 m/min | 5000 kg | 45 kW | V60.100 72 kVA |
| | | | 2a | 40 m/min | 5000 kg | | |
| | | | 3a | 60 m/min | 3500 kg | | |
| | | | 4a | 80 m/min | 2600 kg | | |
| | | | 5a | 100 m/min | 2200 kg | | |
| | | | 1a | 1 m/min | 10000 kg | | |
| | | | 2a | 20 m/min | 10000 kg | | |
| | | | 3a | 30 m/min | 7000 kg | | |
| | | | 4a | 40 m/min | 5200 kg | | |
| | | | 5a | 50 m/min | 4400 kg | | |
| Carrello Trolleying Distribution Katzfahren Distribución Distribuição | ◀ ▶ | ↔ | 1a | 8 m/min | 10000 kg | 5.5 kW | Potenza elettrica necessaria Puissance électrique nécessaire Necessary electric power Anschlusswert Potencia |
| | | | 2a | 40 m/min | 10000 kg | | |
| | | | 3a | 80 m/min | 5000 kg | | |
| Rotazione Slewing Orientation Schwenken Orientación Rotação | | | 1a | 0 → 0.2 | giri/min tr/min rp/min | 6.6 kW @ 1200rpm n° 3 x 2.2 kW | |
| | | | 2a | 0 → 0.6 | | | |
| | | | 3a | 0 → 0.9 | | | |
| Traslazione Travelling Translation Kranfahren Traslación Traslación | ◀ ▶ | | 1a | 0 → 5 | 9 kW | | |
| | | | 2a | 0 → 20 | | | |

Rete elettrica – Réseau – Mains supply – Netzstrom – Red – Rede electrica 400V – 50 Hz



Documento commerciale non contrattuale
Für technische Informationen, siehe die
entsprechenden Anweisungen.

Unverbindliches Vertriebsdokument.
Für technische Informationen, siehe die
entsprechenden Anweisungen.

This commercial document is not legally
binding. For any technical information, please
refer to the corresponding instructions.

Documento commerciale non contrattuale
Para cualquier información técnica,
ver la redicte correspondiente.