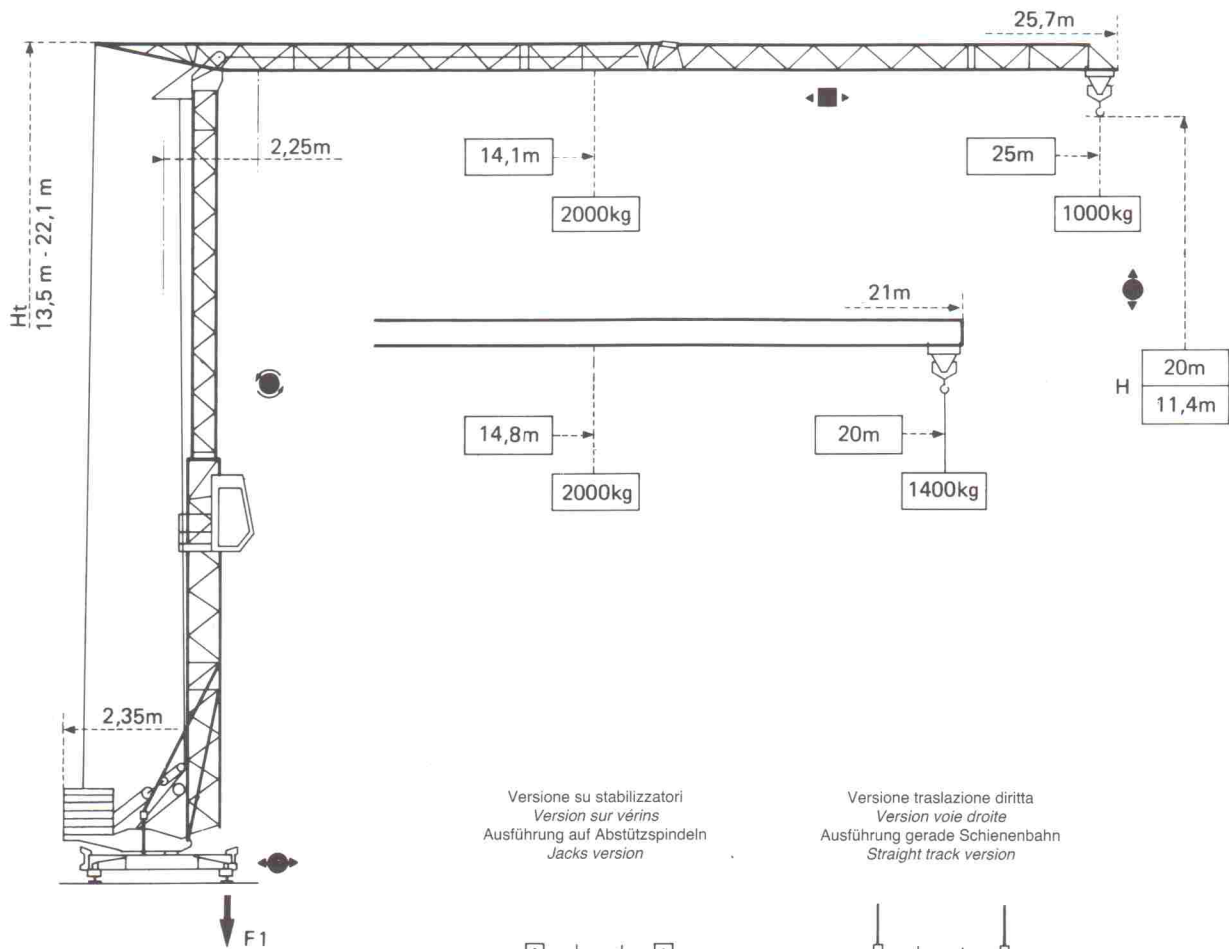


Dimensioni

Cotes

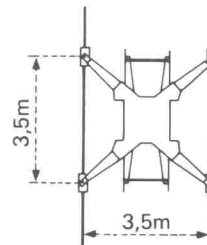
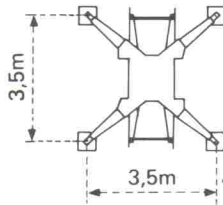
Abmessungen

Dimensions



Versione su stabilizzatori
Version sur vérins
Ausführung auf Abstützspindeln
Jacks version

Versione traslazione dritta
Version voie droite
Ausführung gerade Schienenbahn
Straight track version



F1= Reazioni Réactions Eckdrücke Reactions

F1	● 13t	■ 8t
	8,9t	

● In servizio
■ Fuori servizio
 A vuoto senza zavorra e assali di trasporto, con altezza e braccio massimo

● En service
■ Hors service
 A vide sans lest ni train de transport, avec flèche et hauteur maximum.

● In Betrieb
■ Ausser Betrieb
 Ohne Last, Ballast und Transportachse, mit Maximalausleger und Maximalhöhe.

● In service
■ Out of service
 Without load, ballast or transport axles, with maximum jib and maximum height.