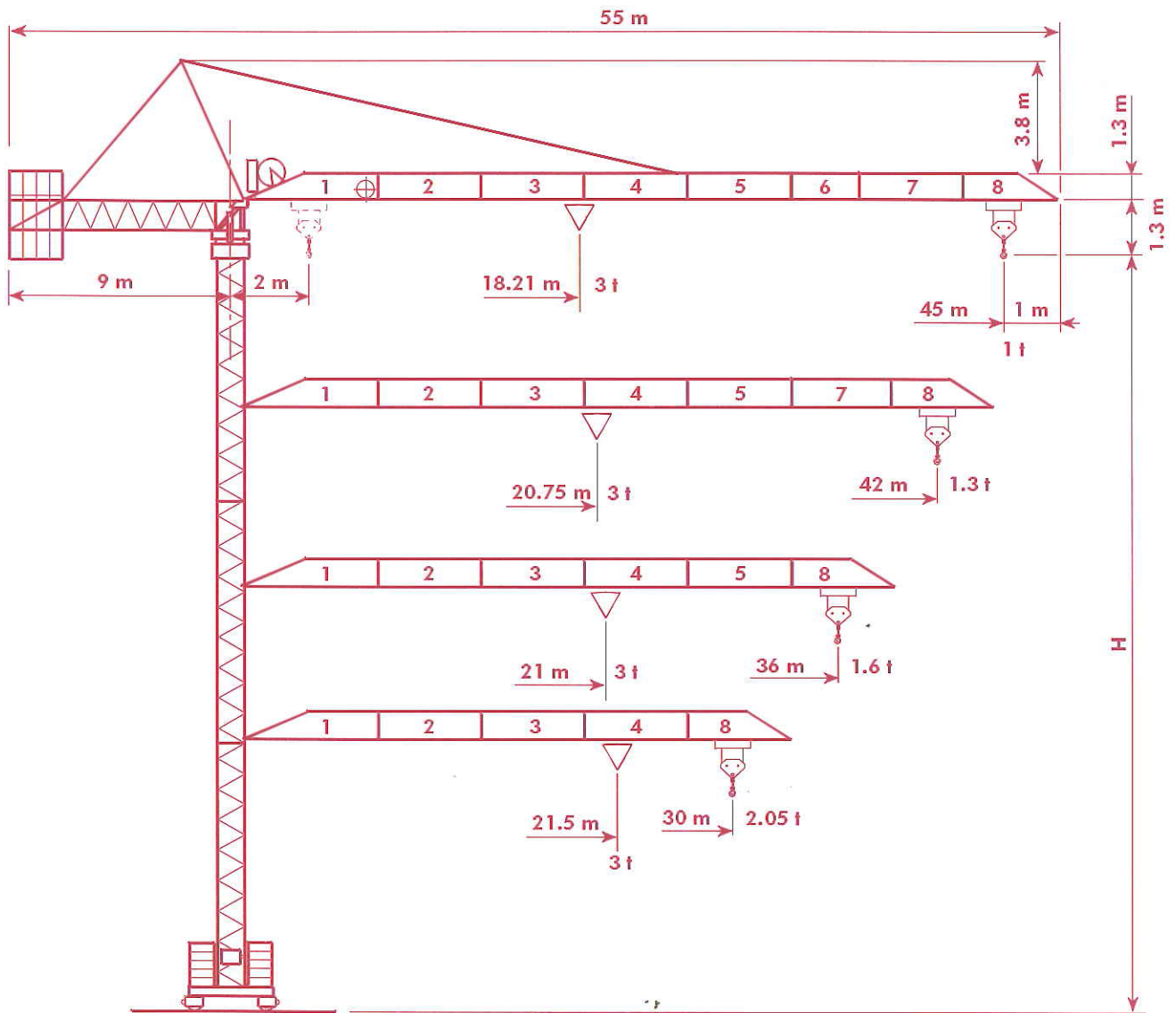




# City Crane



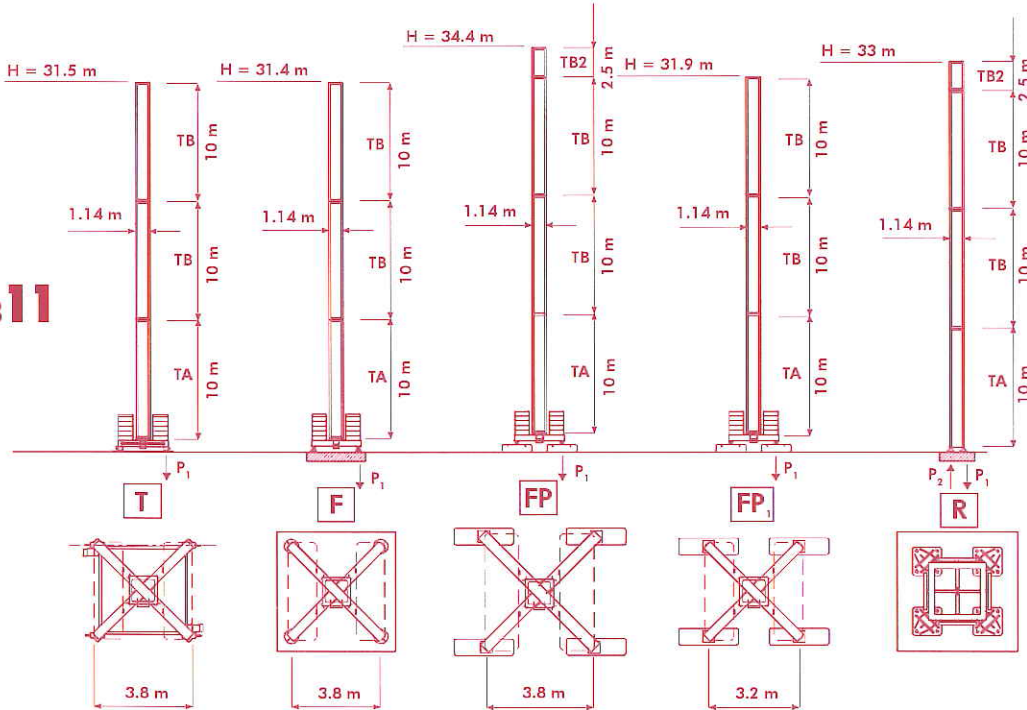
# GTS 451



# COMEDIL GTS 451

Torre Mast	I GB	Mat Turm	F D	Mástil E
------------	------	----------	-----	----------

N<sub>B</sub>11



10 m	5 m	5 m		
TB	TB1	TB1		
10 m	2.5 m	2.5 m	2.5 m	2.5 m
TB	TB2	TB2	TB2	TB2

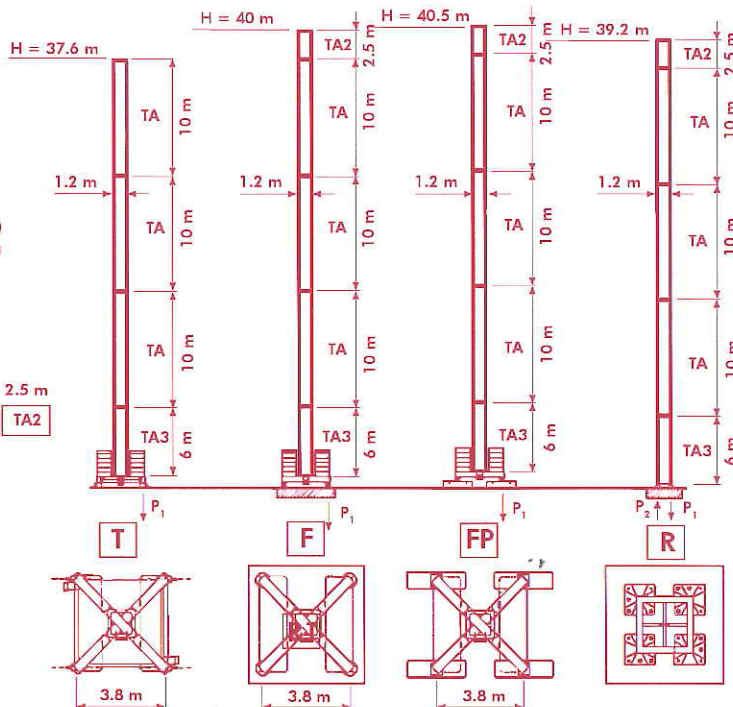
P <sub>1</sub>	695 kN ●	926 kN ◊
P <sub>2</sub>	521 kN ●	770 kN ◊
	18.8 t	

P <sub>1</sub>	392 kN ●	413 kN ◊	P <sub>1</sub>	382 kN ●	414 kN ◊	P <sub>1</sub>	413 kN ●	477 kN ◊	P <sub>1</sub>	447 kN ●	493 kN ◊
	22.5 t			22.5 t			23 t			21.3 t	

- H Altezza massima sotto gancio I
- In servizio
- ◊ Fuori servizio
- A vuoto, senza zavorra, braccio max., altezza max.
- H Hauteur maxi. sous crochet F
- En service
- ◊ Hors service
- A vide, sans lest, avec fleche et hauteur maximum
- H Maxima altura bajo gancio E
- En servicio
- ◊ Fuera de servicio
- Sin carga, sin lastre, con pluma y altura máxima
- H Max. under hook height GB
- In service
- ◊ Out of service
- Without load, without ballast, max. jib and max. height
- H Höchste Hackenhöhe D
- In Betrieb
- ◊ Außer Betrieb
- Ohne Last und Ballast, mit Maximalausleger und Maximalhöhe

S12

10 m	5 m	5 m		
TA	TA1	TA1		
10 m	2.5 m	2.5 m	2.5 m	2.5 m
TA	TA2	TA2	TA2	TA2



P <sub>1</sub>	747 kN ●	1162 kN ◊
P <sub>2</sub>	544 kN ●	985 kN ◊
	21 t	

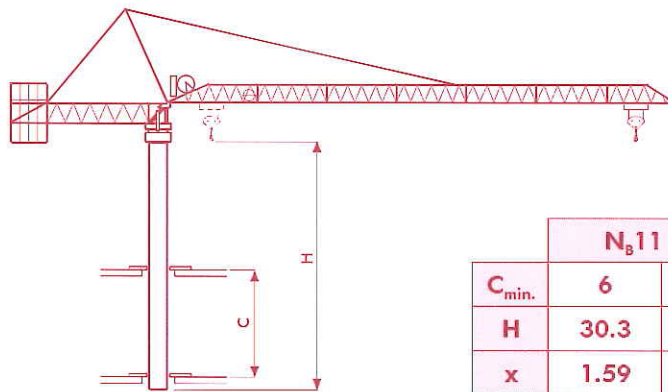
P <sub>1</sub>	449 kN ●	512 kN ◊	P <sub>1</sub>	469 kN ●	577 kN ◊	P <sub>1</sub>	481 kN ●	593 kN ◊
	25 t			25 t			25 t	

# COMEDIL GTS 451

**Diagramma di portata** I **Curbes de charges** F **Curvas de cargas** E  
**Load Diagram** GB **Lastkurven** D

GTS 451																	
H		m		10	12	16	18	21	24	27	30	33	36	39	42	45	
3000	kg	18.21	m	kg	3000	3000	3000	3000	2550	2190	1900	1680	1490	1340	1200	1090	1000
3000	kg	20.75	m	kg	3000	3000	3000	3000	2960	2540	2220	1960	1750	1570	1420	1300	
3000	kg	21	m	kg	3000	3000	3000	3000	3000	2580	2250	1990	1770	1600			
3000	kg	21.5	m	kg	3000	3000	3000	3000	3000	3000	3000						

**Altre installazioni** I **Autres implantations** F **Otras implantaciones** E  
**Other configurations** GB **Aufstellmöglichkeiten** D

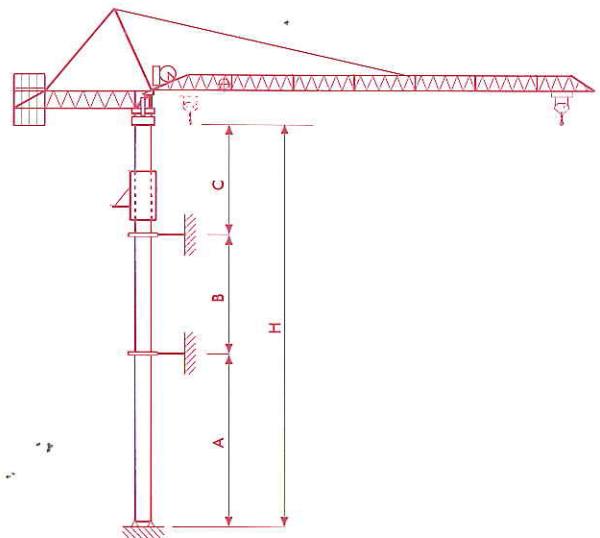


	N <sub>B</sub> 11		S12	
C <sub>min.</sub>	6	m	6.5	m
H	30.3	m	36.4	m
x	1.59	m	1.55	m
y	1.33	m	1.3	m

i



	"R"			
	N <sub>B</sub> 11		S12	
A	~24	m	~30	m
B	~16	m	~18	m
C <sub>max</sub>	~17	m	~25	m
H <sub>max</sub>	~81.4	m	~134	m
H > H <sub>max</sub>	i			



i Consultateci C Distanza fra i collari I Nous consulter Distance entre cadres F Consult us Distance between collars GB Consultarnos Distancia entra marcos E Auf Anfrage Abstand zwischen den Rahmen D



**Meccanismi**  
**Mechanisms**




**I**  
**GB**

**Mécanismes**  
**Antriebe**





**F**  
**D**





**Mecanismos**













**E**

				
	20 AG 30 HB	35*	400 V – 50 Hz	CE 87/405
	25 AG 30 HB	40*	400 V – 50 Hz / 460 V – 60 Hz	

\* Gru senza traslazione / Crane without travelling equipment / Grue sans translation / Krane ohne Schienenfahren / Grúa sin traslación

			m/min	t	kW	
	20 AG 30 HB (50 Hz)		6	3	15	196 m
			26	3		
			52	1.5		
	*25 AG 30 HB		7	3	17.5	241 m (50 Hz) 196 m (60 Hz)
			32	3		
			63	1.5		

	DAD 22	0-23-46 m/min	1.1 – 2.2 kW
	DSR 3 50	0-10-30-60 m/min	50 – 40 Nm
	SSR 11 50	0-0.8 r.p.m.	50 Nm
	TAD 2 P 13	0-24 m/min	2 x 3 kW

	Sollevamento	<b>I</b>	Levage	<b>F</b>	Elevación	<b>E</b>
	Traslazione carrello		Distribution		Distribución	
	Rotazione		Orientation		Orientación	
	Traslazione		Translation		Traslación	
	Direttiva sul livello acustico		Directive sur le niveau acoustique		Directiva sobre el nivel acustico	
	Consultateci		Nous consulter		Consultarnos	
	Hoisting	<b>GB</b>	Heben	<b>D</b>		
	Trolleying		Katzfahren			
	Slewing		Schwenken			
	Travelling		Schienenfahren			
	Directive on noise level		Richtlinie für den Schall-Leistungspegel			
	Consult us		Auf Anfrage			

AGENTE / DEALER / HÄNDLER / DISTRIBUTEUR / AGENTE