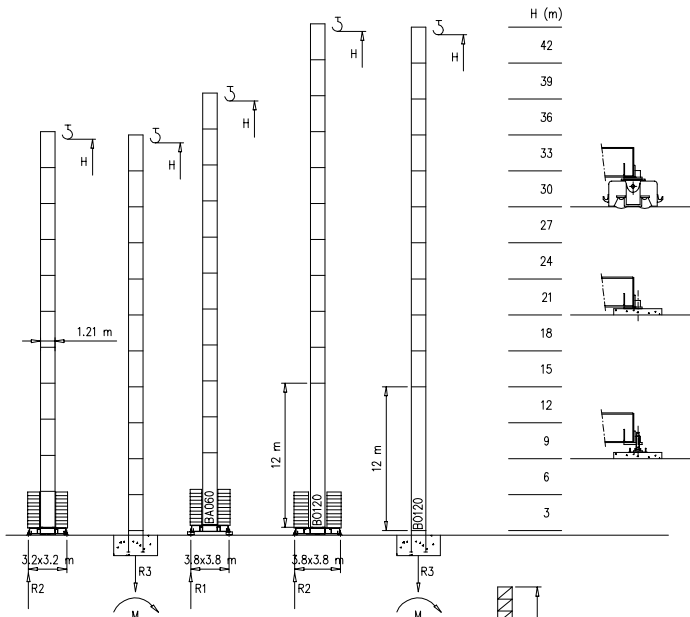


Torre/Reazioni – Masts/Reactions – Mat/Réactions – Maste/Eckdrücke – Mástil/Reacciones – Tramo/Reacções

S1210

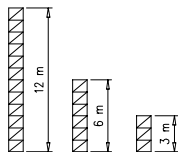
33 m → 45 m



H=37-42 m	
R1	
R2	69 t
R3	40 t
M	185 tm

H=24-36 m	
R1	53 t
R2	53 t
R3	25.6 t
M	116 tm

H=0-23 m	
R1	49 t
R2	47 t
R3	22 t
M	80 tm

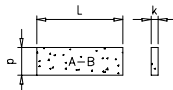


Peso zavorra – Ballast weight – Poids du lest – Ballastgewicht – Peso de lastre



H	n°	Tot.
0-18 m	12 A-B	36000 kg
19-36 m	18 A-B	54000 kg
37-42 m	24 B	72000 kg

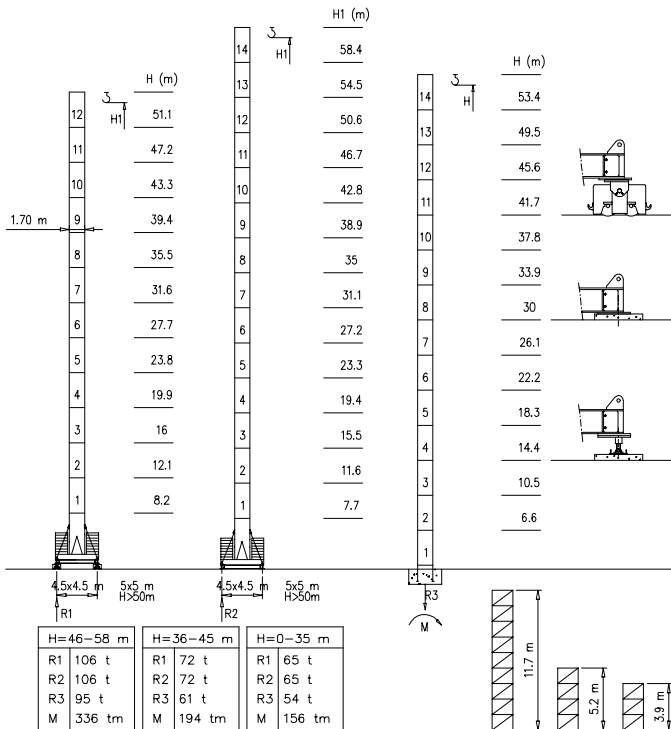
A	B
L 3.6m	4.0m
k 0.3m	1.2m
d 1.15m	0.19m



Torre/Reazioni - Masts/Reactions - Mat/Réactions - Maste/Eckdrücke - Mástil/Reacciones - Tramo/Reacções

S1700

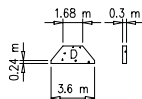
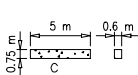
33 m → 45 m



Peso zavorra - Ballast weight - Poids du lest - Ballastgewicht - Peso de lastre



H	n°	Tot.
0-35 m	2C+ 18D	60800 kg
36-45 m	2C+ 22D	72000 kg
46-58 m	2C+ 32D	105000 kg



Curve di carico – Courbes de charges – Load diagrams – LastKurven – Curvas de cargas

Pmax 2500 kg

	12000 kg	45 m	2	23	25	27	29	31	33	35	37	39	41	43	45	m
			2500	2500	2300	2000	1900	1800	1550	1450	1350	1200	1150	1050	1200	kg
	12000 kg	43 m	2	23	25	27	29	31	33	35	37	39	41	43	m	
			2500	2500	2200	2100	1950	1820	1700	1600	1450	1400	1320	1300	kg	
	9600 kg	39 m	2	23	25	27	29	31	33	35	37	39	m			
			2500	2500	2200	2100	1950	1820	1700	1600	1450	1400	kg			
	9600 kg	37 m	2	23	25	27	29	31	33	35	37	m				
			2500	2500	2250	2150	2000	1920	1800	1700	1550	kg				
	9600 kg	33 m	2	23	25	27	29	31	33	m						
			2500	2500	2330	2230	2130	2000	1900	kg						

Pmax 3000 kg

	12000 kg	45 m	2	19	21	23	25	27	29	31	33	35	37	39	41	43	45	m
			3000	3000	2800	2500	2300	2000	1900	1800	1550	1450	1350	1200	1150	1050	1200	kg
	12000 kg	43 m	2	19	21	23	25	27	29	31	33	35	37	39	41	43	m	
			3000	3000	2750	2500	2200	2100	1950	1820	1700	1600	1450	1400	1320	1300	kg	
	9600 kg	39 m	2	19	21	23	25	27	29	31	33	35	37	39	m			
			3000	3000	2750	2500	2200	2100	1950	1820	1700	1600	1450	1400	kg			
	9600 kg	37 m	2	19	21	23	25	27	29	31	33	35	37	m				
			3000	3000	2800	2550	2250	2150	2000	1920	1800	1700	1550	kg				
	9600 kg	33 m	2	19	21	23	25	27	29	31	33	m						
			3000	3000	2880	2630	2330	2230	2130	2000	1900	kg						

Pmax 4000/2000 kg

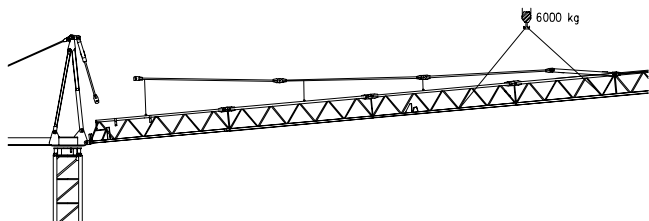
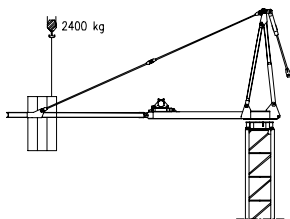
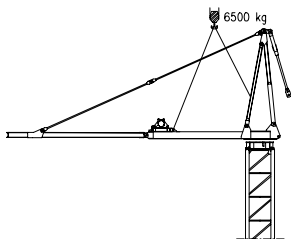
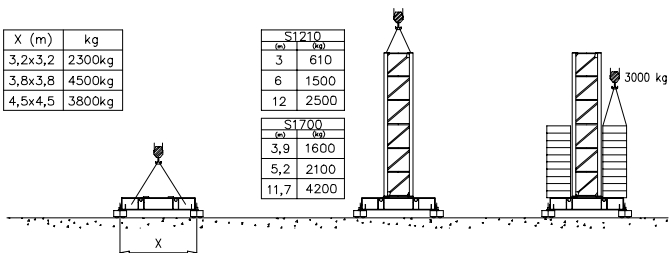
	12000 kg	45 m	2	15	17	19	21	23	25	27	29	31	33	35	37	39	41	43	45	m
			4000	4000	3520	3200	2800	2500	2300	2000	1900	1800	1550	1450	1350	1200	1150	1050	1200	kg
	12000 kg	43 m	2	16	17	19	21	23	25	27	29	31	33	35	37	39	41	43	m	
			4000	4000	3600	3150	2750	2500	2200	2100	1950	1820	1700	1600	1450	1400	1320	1300	kg	
	9600 kg	39 m	2	16	17	19	21	23	25	27	29	31	33	35	37	39	m			
			4000	4000	3600	3150	2750	2500	2200	2100	1950	1820	1700	1600	1450	1400	kg			
	9600 kg	37 m	2	16	17	19	21	23	25	27	29	31	33	35	37	m				
			4000	4000	3650	3200	2800	2550	2250	2150	2000	1920	1800	1700	1550	kg				
	9600 kg	33 m	2	16	17	19	21	23	25	27	29	31	33	m						
			4000	4000	3730	3280	2880	2630	2330	2230	2130	2000	1900	kg						

Montaggio – Montage – Erection – Montage – Montaje – Montagem

X (m)	kg
3,2x3,2	2300kg
3,8x3,8	4500kg
4,5x4,5	3800kg

S1210	
(m)	(kg)
3	610
6	1500
12	2500

S1700	
(m)	(kg)
3,9	1600
5,2	2100
11,7	4200



Meccanismi – Mechanisms – Mécanismes – Antriebe – Mecanismos

Sollevamento S15.40 e V15.40 Hoisting Levage Heben Elevación Elevação		1a	4 m/min	2500 kg	11 kW	S15.40
		2a	20 m/min	2500 kg		22 kVA
		3a	40 m/min	1200 kg		V15.40 20 kVA
Sollevamento S20.60 e V20.60 Hoisting Levage Heben Elevación Elevação		1a	7 m/min	2500 kg	14.7 kW	S20.60
		2a	28 m/min	2500 kg		28 kVA
		3a	56 m/min	1200 kg		V20.60 24 kVA
Sollevamento S20.40 e V20.40 Hoisting Levage Heben Elevación Elevação		1a	4 m/min	3000 kg	14.7 kW	S20.40
		2a	20 m/min	3000 kg		28 kVA
		3a	40 m/min	1500 kg		V20.40 24 kVA
Sollevamento S25.60 e V25.60 Hoisting Levage Heben Elevación Elevação		1a	7 m/min	3000 kg	18.5 kW	S25.60
		2a	28 m/min	3000 kg		34 kVA
		3a	56 m/min	1500 kg		V25.60 28 kVA
Sollevamento S15.40 e V15.40 Hoisting Levage Heben Elevación Elevação		1a	4 m/min	2000 kg	11 kW	S15.40 22 kVA V15.40 20 kVA
		2a	20 m/min	2000 kg		
		3a	40 m/min	1200 kg		
		1a	2 m/min	4000 kg		
		2a	10 m/min	4000 kg		
		3a	20 m/min	2400 kg		
Sollevamento S20.60 e V20.60 Hoisting Levage Heben Elevación Elevação		1a	7 m/min	2000 kg	14.7 kW	S20.60 28 kVA V20.60 24 kVA
		2a	28 m/min	2000 kg		
		3a	56 m/min	1200 kg		
		1a	3.5 m/min	4000 kg		
		2a	14 m/min	4000 kg		
		3a	28 m/min	2400 kg		
Carrello Trolleying Distribution Katzfahren Distribución Distribuição		1a	OP 5 m/min	4000 kg	2.2 kW	Potenza elettrica necessaria Puissance électrique nécessaire Necessary electric power Anschlusswert
		2a	25 m/min	4000 kg		
		3a	50 m/min	2000 kg		
Rotazione Slewing Orientation Schwenken Orientación Rotação		1a	0 → 0.2	giri/min	2.2 kW @ 1200rpm	
		2a	0 → 0.6	tr/min		
		3a	0 → 0.9	rp/min		
Traslazione Travelling Translation Kranfahren Traslación Traslação		1a	0 → 20		3.7 kW	

Rete elettrica – Réseau – Mains supply – Netzstrom – Red – Rede electrica 400V – 50 Hz

