

Mat / Réactions
Maste / Eckdrücke

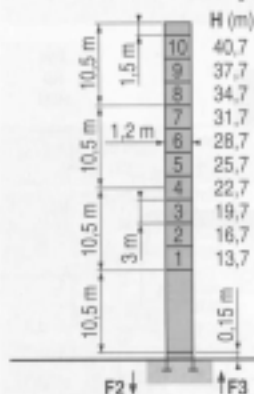
Masts / Reactions
Mástil / Reacciones

Torre / Reazioni
塔身 / 反力



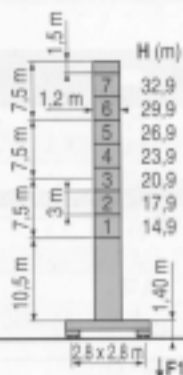
Ø 1,2 m

20 m = 40 m



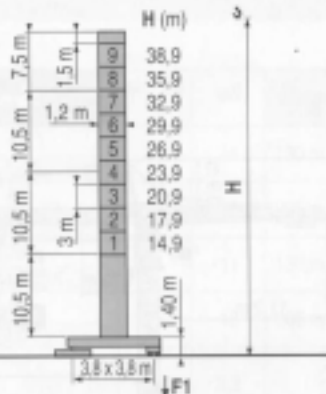
P 12 C

F2 ● 62 t ■ 96 t
F3 ● 49 t ■ 84 t
▲ 15,5 t



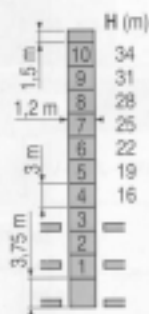
ZE 12 A

F1 ● 42 t ■ 53 t
▲ 18 t

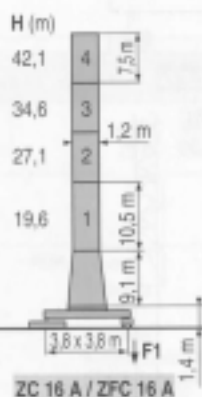


ZF 12 A / ZFC 12 A

F1 ● 39 t ■ 52 t
▲ 20,5 t

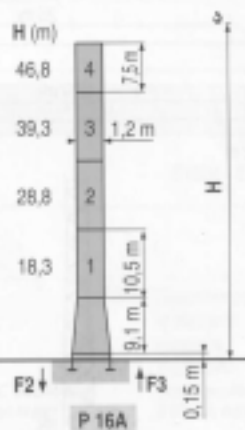


B 125 A / P 12 B



ZC 16 A / ZFC 16 A

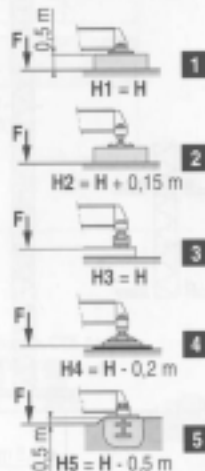
F1 ● 45 t ■ 61 t
▲ 23 t



P 16 A

F2 ● 57 t ■ 100 t
F3 ● 42 t ■ 86 t
▲ 19 t

ZE - ZF - ZC - ZFC



LUK 2

● Voir télescopage sur dalles
● Réactions en service
● Réactions hors service
▲ A vide sans lest (ni train de transport) avec flèche et hauteur maximum.

● See climbing crane
● Reactions in service
● Reactions out of service
▲ Without load, ballast (or transport axes), with maximum jib and maximum height.

● Consultare gru in cavetto
● Reazioni in servizio
● Reazioni fuori servizio
▲ A vuoto, senza zavorra (né assai di trasporto) con braccio massimo e altezza massima.

● Siehe Kletterkrane im Gebäude
● Reaktionskräfte in Betrieb
● Reaktionskräfte außer Betrieb
▲ Ohne Last, Ballast (und Transportachse), mit Maximalausleger und Maximalhöhe.

● Yes grua trepadora
● Reacciones en servicio
● Reacciones fuera de servicio
▲ Sin carga, sin lastre, (ni tren de transporte), flecha y altura máxima.

● 爬楼板提升
● 工作状态下的反应
● 非工作状态下的反应
▲ 空载无压重估, 无运输臂
有吊臂和最大高度

Courbes de charges
Lastkurven

Load diagrams
Curvas de cargas

Curve di carico
负荷曲线

| | | | | | | | | | | | | | | |
|------|--------|------|------|------|------|-----|------|------|------|------|------|------|-----|------|
| 45 m | 1,75 ▶ | 18,6 | 20 | 21,7 | 22 | 25 | 27 | 30 | 32 | 35 | 37 | 40 | 42 | 45 m |
| max. | ↙ | 3 | 2,75 | - | 2,45 | 2,1 | 1,9 | 1,7 | 1,55 | 1,4 | 1,3 | 1,17 | 1,1 | 1 t |
| | ↘ | | | 2,5 | 2,45 | 2,1 | 1,9 | 1,7 | 1,55 | 1,4 | 1,3 | 1,17 | 1,1 | 1 t |
| 40 m | 1,75 ▶ | 20,1 | 22 | 23,5 | 25 | 27 | 30 | 32 | 35 | 37 | 40 m | | | |
| max. | ↙ | 3 | 2,7 | - | 2,3 | 2,1 | 1,85 | 1,72 | 1,54 | 1,44 | 1,3 | 1 | | |
| | ↘ | | | 2,5 | 2,3 | 2,1 | 1,85 | 1,72 | 1,54 | 1,44 | 1,3 | 1 | | |
| 35 m | 1,75 ▶ | 20,2 | 22 | 23,6 | 25 | 27 | 30 | 32 | 35 m | | | | | |
| max. | ↙ | 3 | 2,7 | - | 2,3 | 2,1 | 1,85 | 1,73 | 1,55 | 1 | | | | |
| | ↘ | | | 2,5 | 2,3 | 2,1 | 1,85 | 1,73 | 1,55 | 1 | | | | |
| 30 m | 1,75 ▶ | 20,2 | 22 | 23,6 | 25 | 27 | 30 m | | | | | | | |
| max. | ↙ | 3 | 2,7 | - | 2,3 | 2,1 | 1,9 | 1 | | | | | | |
| | ↘ | | | 2,5 | 2,3 | 2,1 | 1,9 | 1 | | | | | | |
| 25 m | 1,75 ▶ | 20,3 | 22 | 23,7 | 25 m | | | | | | | | | |
| max. | ↙ | 3 | 2,7 | - | 2,35 | 1 | | | | | | | | |
| | ↘ | | | 2,5 | 2,35 | 1 | | | | | | | | |
| 20 m | 1,75 ▶ | 20 m | | | | | | | | | | | | |
| max. | ↙ | 3 | 1 | | | | | | | | | | | |
| | ↘ | | | 2,5 | 1 | | | | | | | | | |

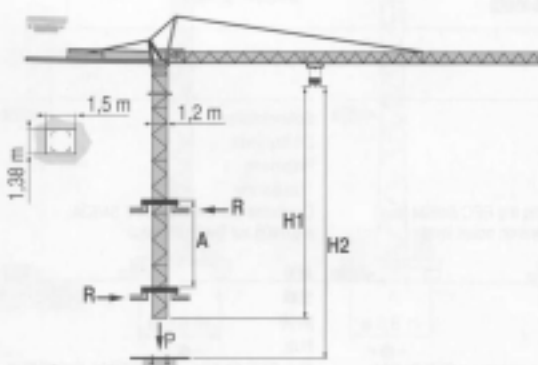
LU 2

Télescopage sur dalles
Kletterkrane im Gebäude

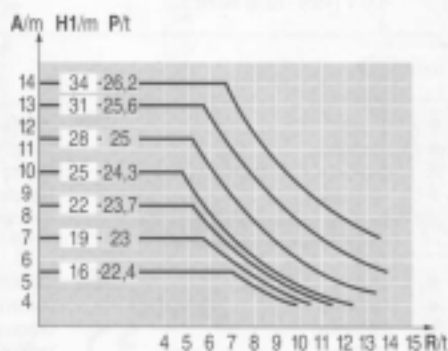
Climbing crane
Telescopage gruas trepadoras

Gru in cavedio
樓板上頂升

B 125 A



LU 1



A Distance entre cadres
H1 Hauteur grue
P Poids de la grue (en service)
R Réaction horizontale

A Distance between collars
H1 Crane height
P Crane weight (in service)
R Horizontal reaction

A Distanza fra i telai
H1 Altezza gru
P Peso della gru (in servizio)
R Reazione orizzontale

A Abstand zwischen den Rahmen
H1 Kranhöhe
P Krangewicht (in Betrieb)
R Horizontalkräfte

A Distancia entre marcos
H1 Altura grúa
P Peso de la grúa (en servicio)
R Reaccion horizontal

A 各附著框之間距離
H1 工作状态下塔机高度
P 工作状态下塔机重量
R 水平反力



| | | | | | ch - PS hp | kW | | |
|------------------------|---------|----------------------------------|---------|-----------------|---------------|---------|----|-------|
| ▲ | 15 PC | m/min | 7 | 21 | 42 | 15 | 11 | 130 m |
| | 13 | t | 2,5 | 2,5 | 1,3 | | | |
| | 25 PC | m/min | 8 | 32,5 | 65 | 25 | 18 | 235 m |
| | | 13 | t | 2,5 | 2,5 | | | |
| | 15 PC | m/min | 7 | 18 | 36 | 15 | 11 | 130 m |
| | | 15 | t | 3 | 3 | | | |
| | 25 PC | m/min | 7 | 27,5 | 55 | 25 | 18 | 206 m |
| | | 15 | t | 3 | 3 | | | |
| ◀ ▶ | 3 D2 V5 | m/min | 21 - 42 | | 3 | 2,2 | | |
| | RCV 40 | t/min U/min rpm | 0 → 0,8 | | 6 | 4,5 | | |
| ZE - ZF | TVD 324 | m/min | 26 | | 2 x 4 | 2 x 2,9 | | |
| ZC - ZFC | RT 224 | m/min | 25 | | 2 x 4 | 2 x 2,9 | | |
| CEI 38 | IEC 38 | kVA | | | | | | |
| 400 V (+6% -10%) 50 Hz | | 15 PC : 25 KVA 25 PC : 35 KVA | | 84/534 - 87/405 | | | | |

LUK 2

| | | | | | | |
|--|--|--|--|--|--|--|
| | Levage | | Holzing | | Sollevamento | |
| | Distribution | | Trolleying | | Distribuzione | |
| | Orientation | | Stiewing | | Rotazione | |
| | Translation | | Travelling | | Traslazione | |
| | Conforme aux directives CEE 84/534 et 87/405 sur le niveau acoustique | | In compliance with the EEC 84/534 and 87/405 instructions on noise level | | Conforme alle direttive CEE 84/534 e 87/405 sul livello acustico | |
| | Heben | | Elevación | | 昇升 | |
| | Katzfahren | | Distribución | | 交轉 | |
| | Schwenken | | Orientación | | 回轉 | |
| | Krantfahren | | Traslación | | 行走 | |
| | Gemäss EWG-Richtlinien 84/534 und 87/405 für den Schall-Leistungspegel | | Conforme con las directivas CEE 84/534 y 87/405 sobre el nivel acustico | | 符合 CEE 84/534 - CEE 87/405 声强度规定 | |

POTAIN

GROUP INDUSTRIES

18 Rue de Charbonnières, B.P. 173
F-69132 ECULLY Cedex
Tel. (33)04.72.18.20.20
Fax (33)04.72.18.20.00
http://www.potain.com
E-mail: mki@potain.fr

CITY CRANE MC 68 B

Copyright/Reproduction interdite © POTAIN 2000

Deutschland
POTAIN GmbH Tel.: 06.105.704.0
Italia
POTAIN S.p.A. Tel.: 0.331.49.33.11
Singapore
POTAIN PTE LTD Tel.: (06.65) 227.1556