

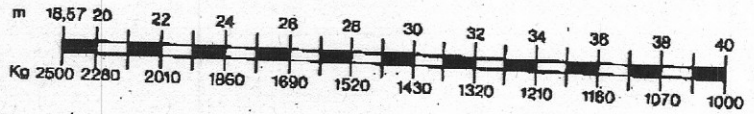
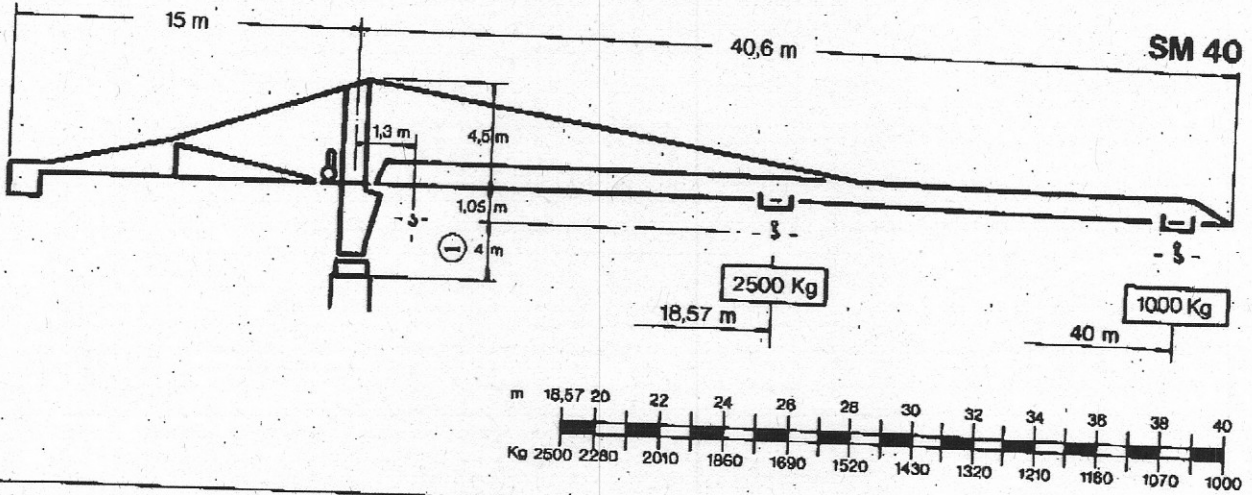


# GRU A TORRE

# S 10.40 - A 2,5

Montaggio idraulico  
Cabina panoramica rotante

**S 551 A - 12**  
**DIN 15018 - H1/B3**



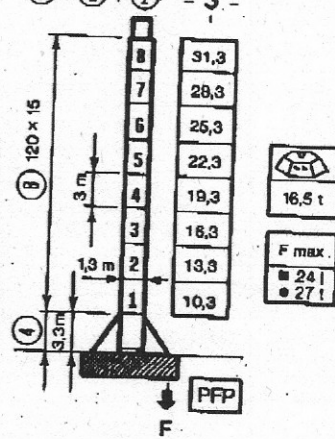
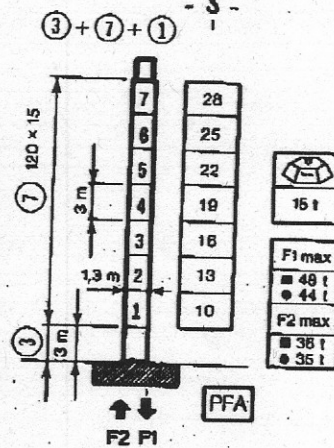
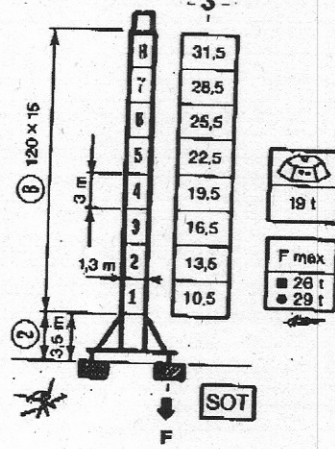
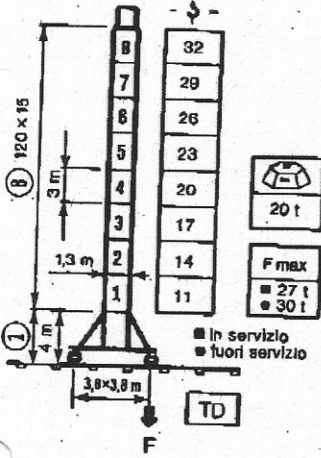
L'altezza H è approssimativa: carrello in punta al braccio bozzello nella posizione rappresentata.

$$\textcircled{1} + \textcircled{8} + \textcircled{1} \quad H \text{ (m)}$$

$$\textcircled{2} + \textcircled{8} + \textcircled{1} \quad H \text{ (m)}$$

$$\textcircled{3} + \textcircled{7} + \textcircled{1} \quad H \text{ (m)}$$

$$\textcircled{4} + \textcircled{8} + \textcircled{1} \quad H \text{ (m)}$$



H massima gru ancorata 95 m. - Per altezze superiori consultateci  
Rotaia da 36 Kg/m.

		m/mln.	Kg	
 12 PC 15 11 KW (15 CV)			48	1250
			24	2500
			5	2500

	1 RS 4	0,7 giri/mln	3 KW (4 CV)
	DT 125	35 m/min	1,6 KW (2,5 CV)
	TD 323 G	25 m/min	2 x 2,2 KW (2 x 3 CV)

220 V 380 V 50 Hz	Potenza necessaria 20 KVA	Gruppo elettrogeno consultateci
-------------------------	------------------------------	------------------------------------