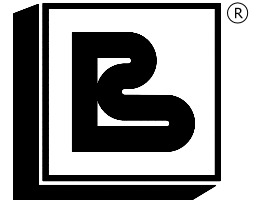


# benazzato gru

S.p.A.

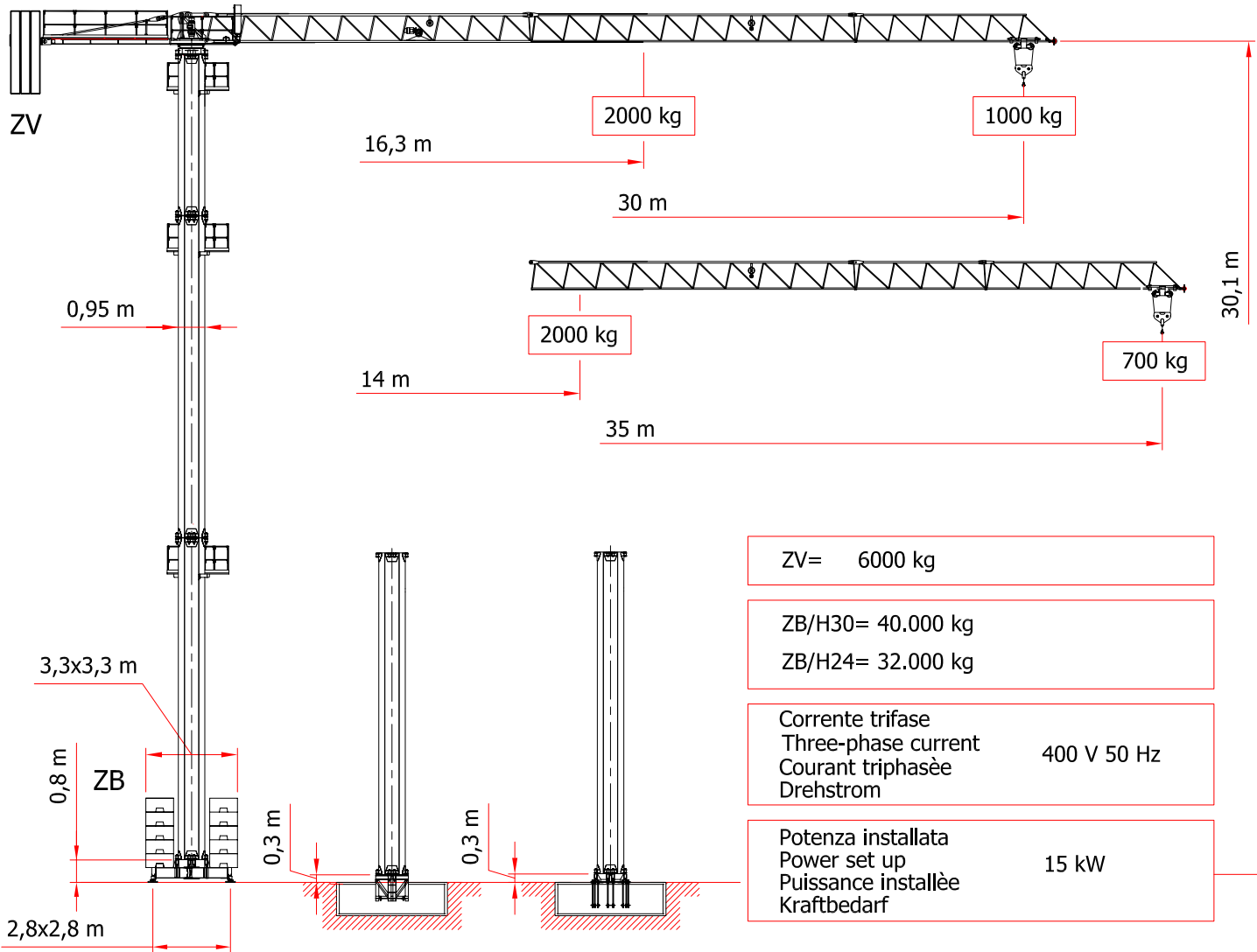


28047 OLEGGIO (NO) - VIA SANTO STEFANO 103  
 TELEFONO 0321 / 93.535-94.734 (ric. aut.) - FAX 0321 / 94.824  
 E-mail info@benazzatogru.it - web site www.benazzatogru.it

SERIE 305 FLAT

CITY 30/1000

35/700



ZV= 6000 kg

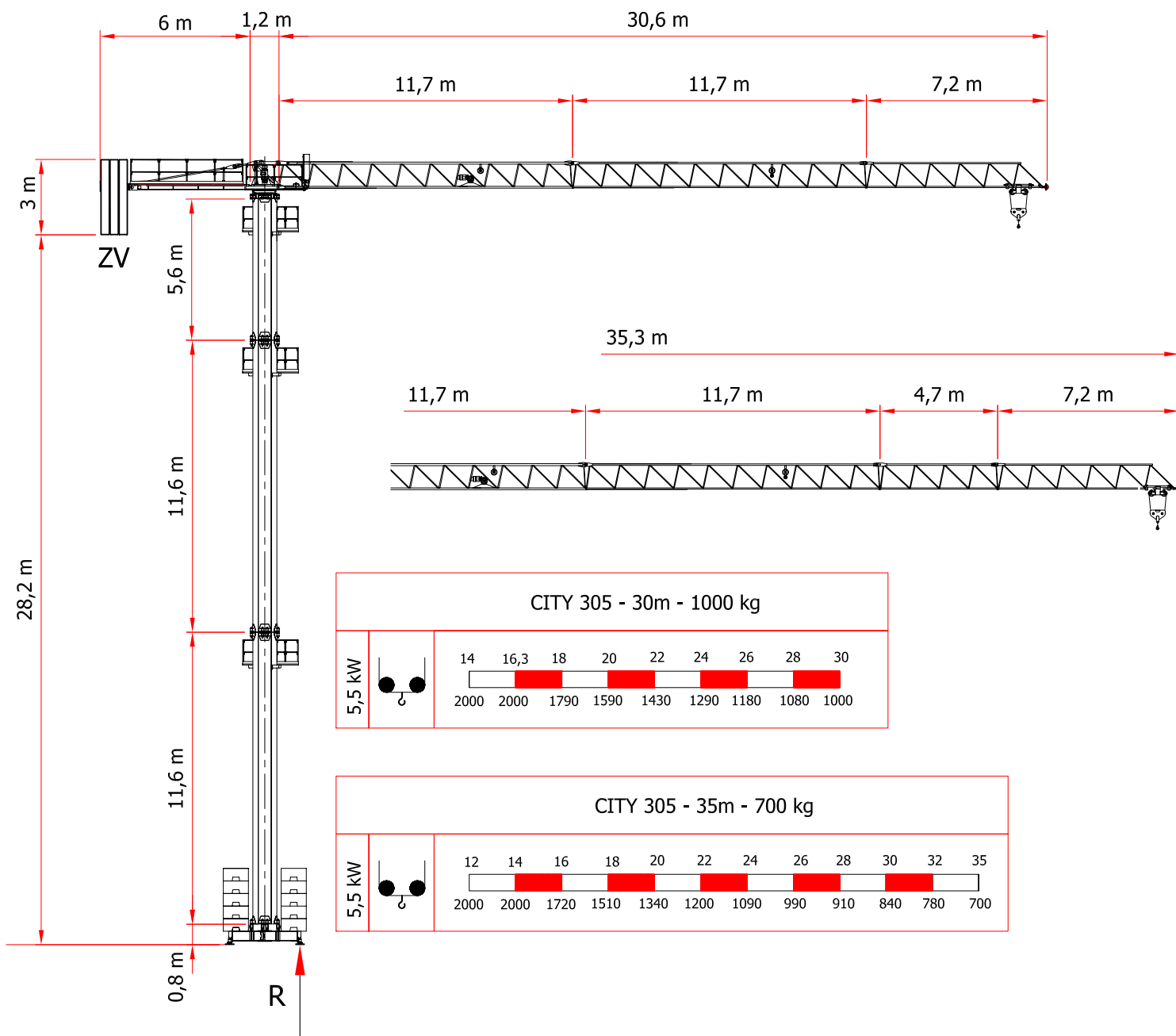
ZB/H30= 40.000 kg  
 ZB/H24= 32.000 kg

Corrente trifase  
 Three-phase current  
 Courant triphasée  
 Drehstrom  
 400 V 50 Hz

Potenza installata  
 Power set up  
 Puissance installée  
 Kraftbedarf  
 15 kW

	5,5 kW				23/46 m/1'
		kg	m/1'		2,2/2,2 kW
		1000	30		0-1,1 rpm
		2000	15		2,2 kW
	2000	4	INVERTER		

Torre in tubo ottagonale zincato  
 Octagonal galvanized closed beam tower  
 Mat galvanisé en tube octogonal  
 Kran mit feuerverzinkt oktagonalem rohrturn  
 Mastil galvanizado de tubo octogonal



**305**

REAZIONE

**R = 35.000 kg**

REACTION

DIN 15018 H<sub>1</sub> B<sub>2</sub> B<sub>3</sub> DIN 15019

CON RISERVA DI MODIFICHE  
 SUBJECT TO MODIFICATION  
 RESERVA DE MODIFICACIONES  
 MODIFICATIONS RESERVEES  
 ANDERUNGEN VORBEHALTEN