

Gru idraulica a montaggio rapido

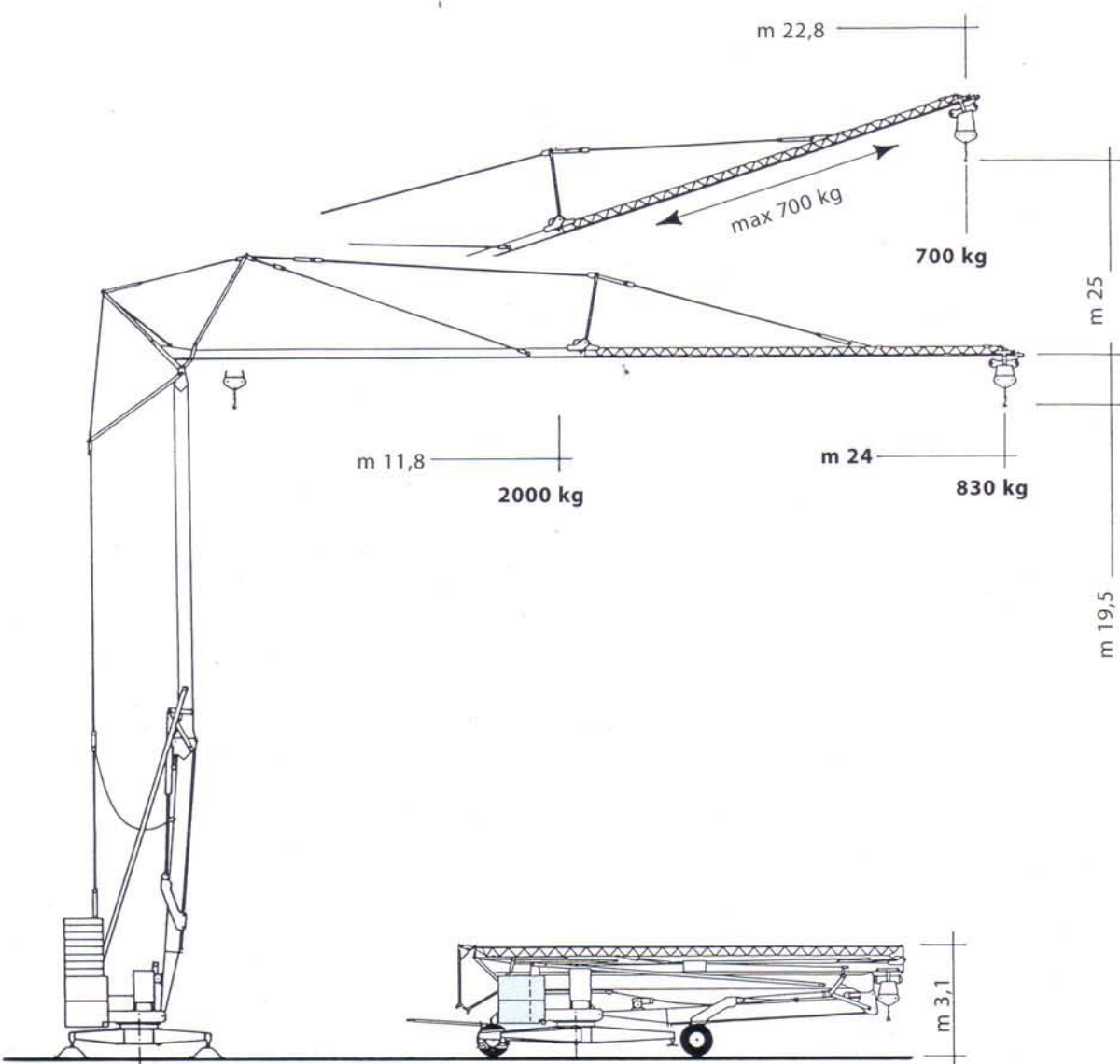
Hydraulic crane with quick assembling

Grue hydraulique à montage rapide

Hydraulischer Schnellmontagekran

Grúa hidráulica de montaje rápido

CM 64 C monotrave mista



CATTANEO

Qualità certificata ISO 9001
ISO 9001 certified quality
Qualité certifiée ISO 9001
Zertifiziert nach ISO 9001
Calidad certificada ISO 9001

SINCERT


UNI EN ISO 9001 (ISO 9001)




DNV


Certified Quality System

No. SQ 1267-IT

380V - 50Hz		m/1'	kg	cv	kW
Sollevamento Hoisting Levage Hubwerk Elevación	1°	9,5	2000	3,5	2,6
	2°	19	2000	7,5	5,5
	3°	38	830	7,5	5,5



Carrello Trolley Chariot Katzfahrwerk Carro		m/1'	kW
	1°	27	1,5
	2°	54	1,5

Rotazione Slewing Orientation Drehwerk Rotación		r.p.m. g/1'	kW
	0 ÷ 1 INVERTER		2,2

Massa gru (con assale da cantiere) Weight of crane (with yard axle) Poid de la grue (avec essieu de chantier) Konstruktionsgewicht des Krans (mit Rangierfahrwerk) Peso grúa (con eje para obra)		kg 8.555
--------------------------------------------------------------------------------------------------------------------------------------------------------------------------------------------------------------	--	----------

Massa del contrappeso di montaggio Weight of assembling ballast Poid du lest de montage Montageballast Peso lastre de montaje	n. 4 x 1400 kg	kg 5.600
-------------------------------------------------------------------------------------------------------------------------------------------	----------------	----------

Massa del contrappeso di completamento Weight of finishing ballast Poid du lest complementaire Kompletter Gegenballast Peso lastre en fase de trabajo	n. 8 x 800 kg	kg 6.400
-------------------------------------------------------------------------------------------------------------------------------------------------------------------	---------------	----------

Potenza elettrica necessaria (rete elettrica) Necessary electric power (mains supply) Puissance électrique nécessaire (réseau) Anschlusswert (Netzstrom) Potencia electrica necesaria (red)		kVA 12 380V - 50Hz
---------------------------------------------------------------------------------------------------------------------------------------------------------------------------------------------------------	--	-----------------------

