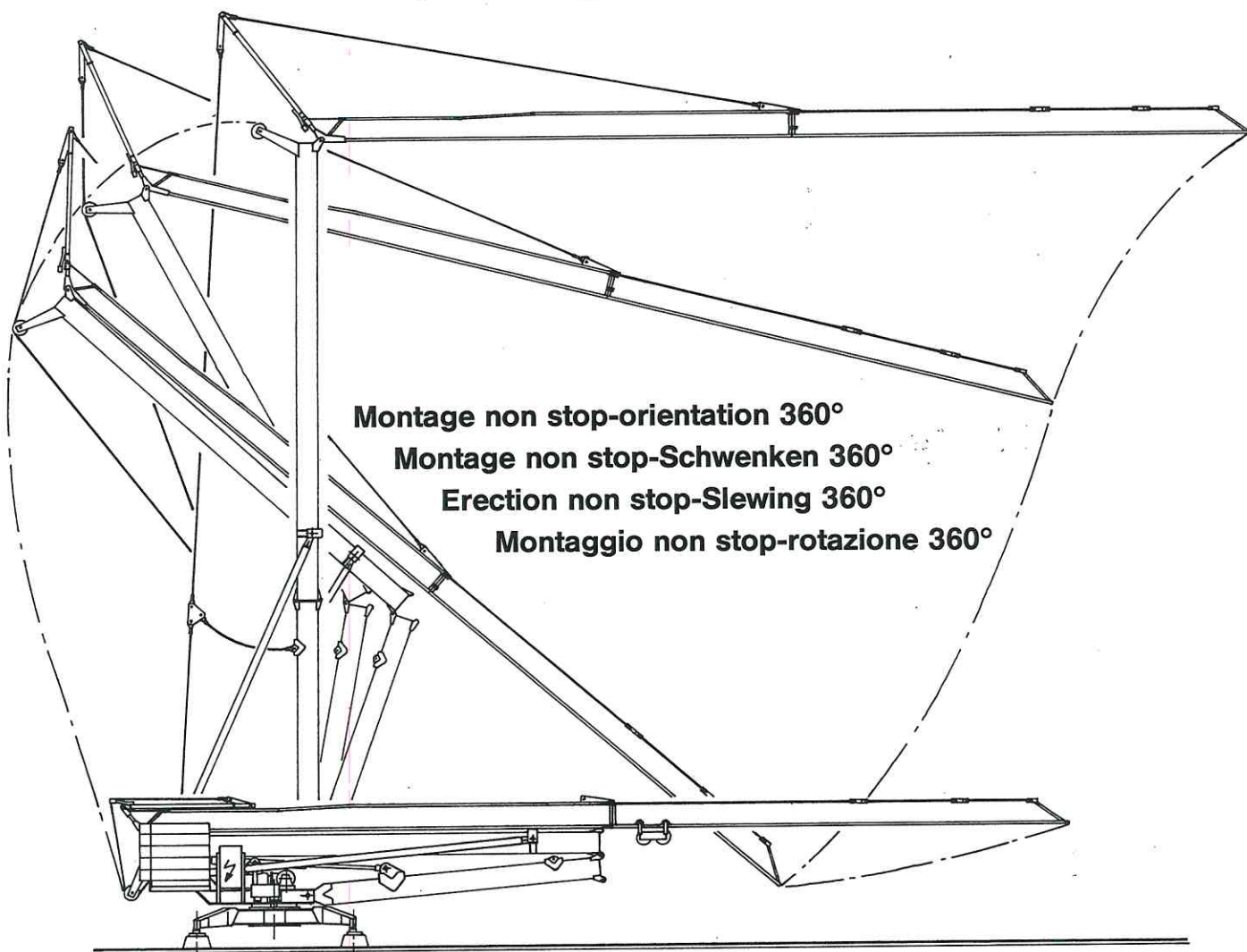




edilgru spa



Mât et flèche zingués au feu

Mast und Ausleger feuerverzinkt

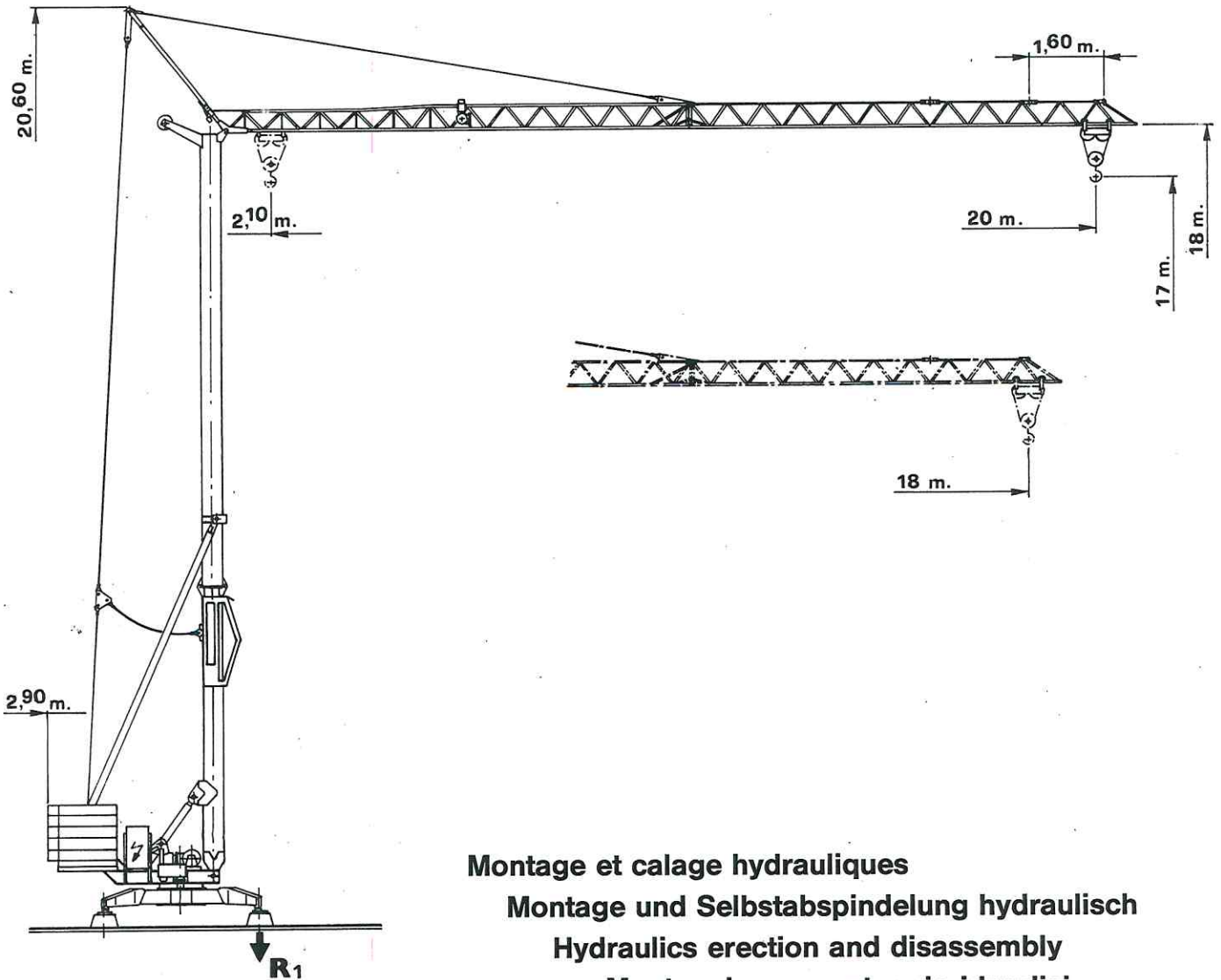
Tower and jib galvanized

Torre e braccio zincati

M.H. TURBO 20



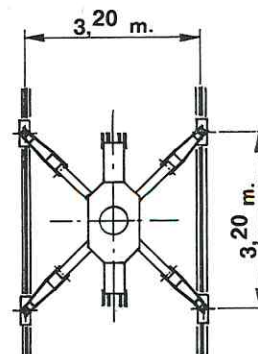
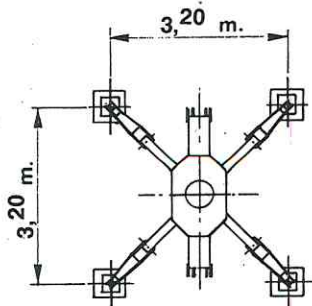
M.H. TURBO 20



Montage et calage hydrauliques Montage und Selbstabspindelung hydraulisch Hydraulics erection and disassembly Montaggio e smontaggio idraulici

Version sur vérin
Ausführung Abstützspindeln
Jacks version
Versione su stabilizzatori

Version voie droite
Ausführung gerade Schienenbahn
Straight track version
Versione traslazione diritta



Réactions - Eckdrücke - Reactions - Reazioni

R1 ● 7550 da N/Kg ■ 6000 da N/Kg

● En service
■ Hors service

● In Betrieb
■ Ausser Betrieb

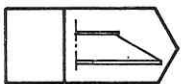
● In service
■ Out of service

● In servizio
■ Fuori servizio

Poids de construction sans essieux - Konstruktionsgewicht ohne Transportachse - Dead weight without transport axles - Peso della gru senza assali Kg 6600

Poids du lest - Ballastgewicht - Ballast weight - Peso zavorra rotante Kg 7200

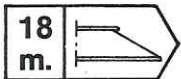
Courbes de charges - Lastkurven - Load curves - Curve di carico



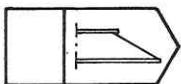
Flèche - Ausleger - Jib - Braccio



11,35	12	14	16	18	20	m.
1500	1410	1180	1010	880	750	kg



11,59	12	14	16	18	m.
1500	1440	1205	1030	900	kg



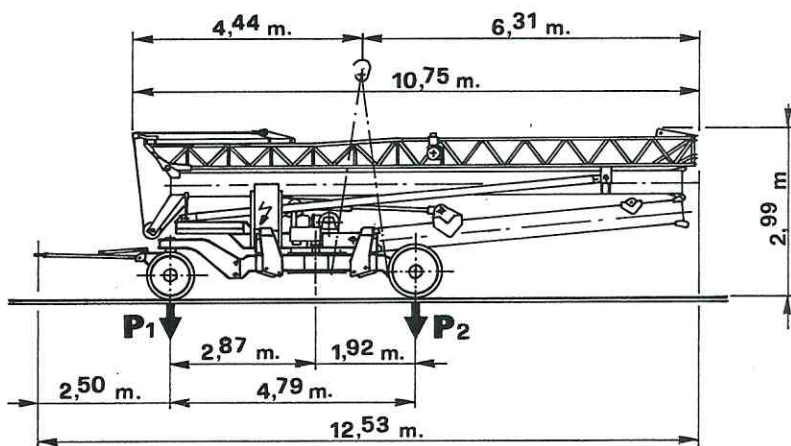
Mécanismes - Antriebe - Mechanisms - Meccanismi

			m/min.	Kg	CV - PS hp	Kw
Levage Heben Hoisting Sollevamento			4,25	1500	1,8	1,32
			17	1500	7,5	5,5
			34	900	7,5	5,5
Distribution - Katzfahren Trolleying - Carrello			28		1,5	1,1
Orientation - Schwenken Slewing - Rotazione			1 tr/min - U/min rpm - g/min		1,5	1,1
Translation - Kranfahren Travelling - Traslazione			24		2x0,75	2x0,55
Puissance électrique nécessaire Anschlusswert Necessary electric power Potenza elettrica necessaria	380 V 50 Hz 	Réseau - Netzstrom Mains supply - Potenza		10 KVA		
		Groupe électrogène Stromaggregat Generator set Gruppo elettrogeno		Nous consulter Auf Anfrage Consult us. Consultarci		

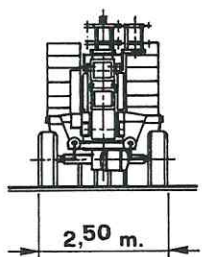
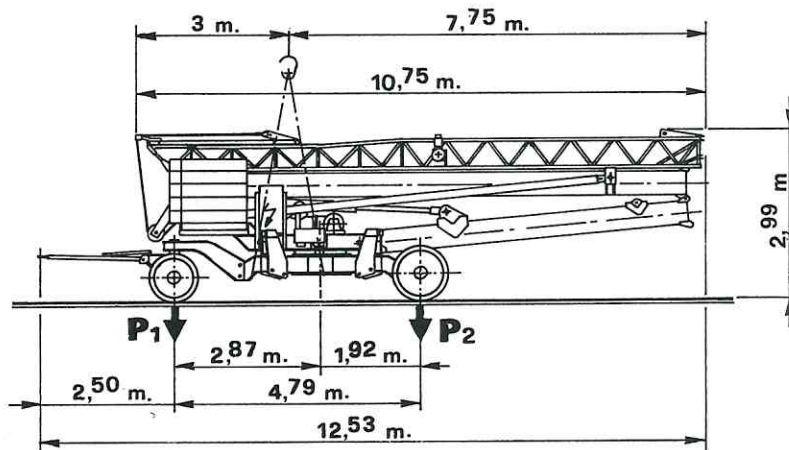
Mode de transport I - Transportart I - Kind of transport I - I soluzione di traino

	A	B
P₁ - kg	1900	8200
P₂ - kg	6200	7400
P_{Tot.} - kg	8100	15600

A



B



edilgru spa

sede e stabilimento
26015 soresina via guida
tel. 0374 / 40391 (4 linee ric. autom.)
EDILGRU - SORESINA
telex 312088 edilgru I
italia