

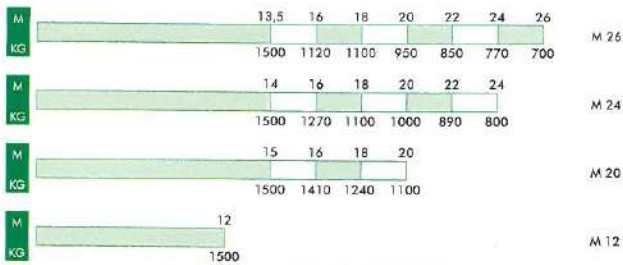


*Super*  
**A26.29.32.35**

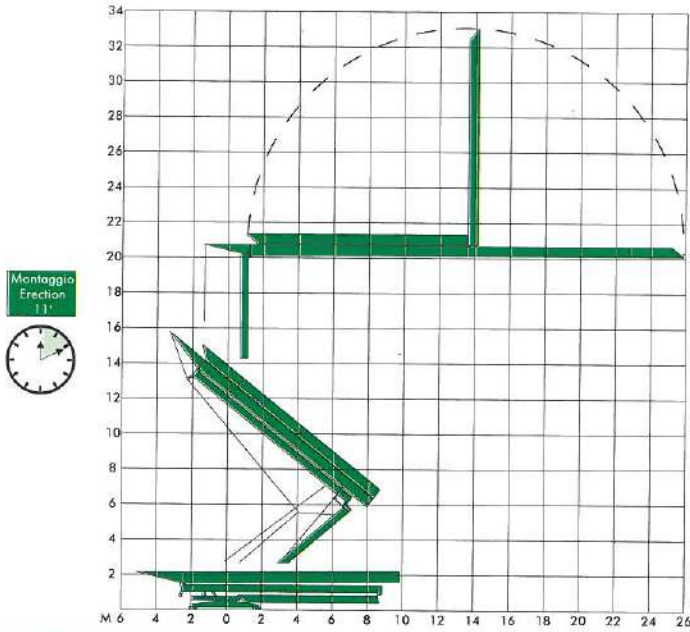
**ALFA**

**A26 Super**

**DIAGRAMMI DI CARICO/LOAD DIAGRAMS**

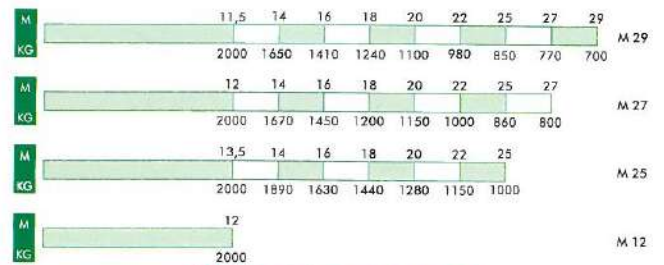


**MONTAGGIO/ERECTION**

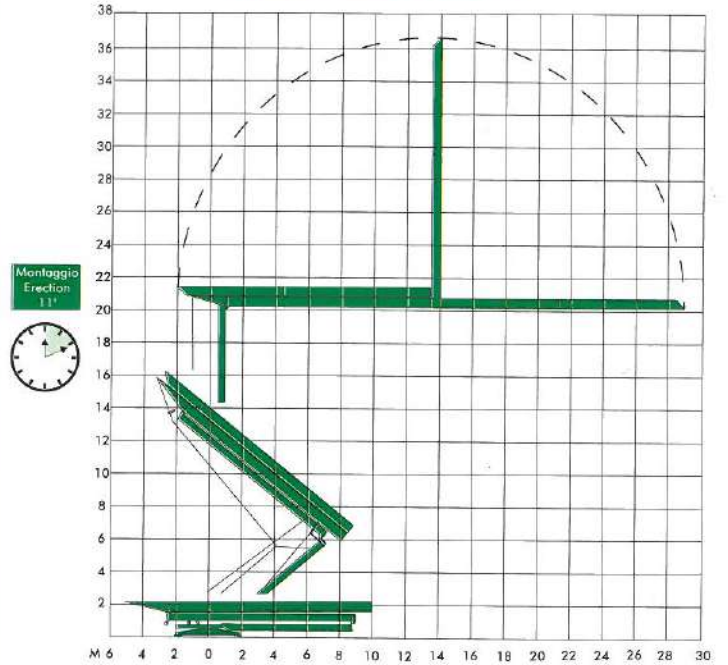


**A29 Super**

**DIAGRAMMI DI CARICO/LOAD DIAGRAMS**

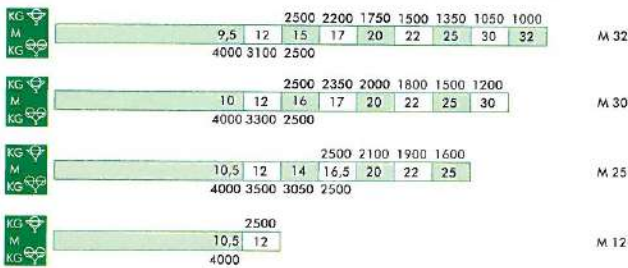


**MONTAGGIO/ERECTION**

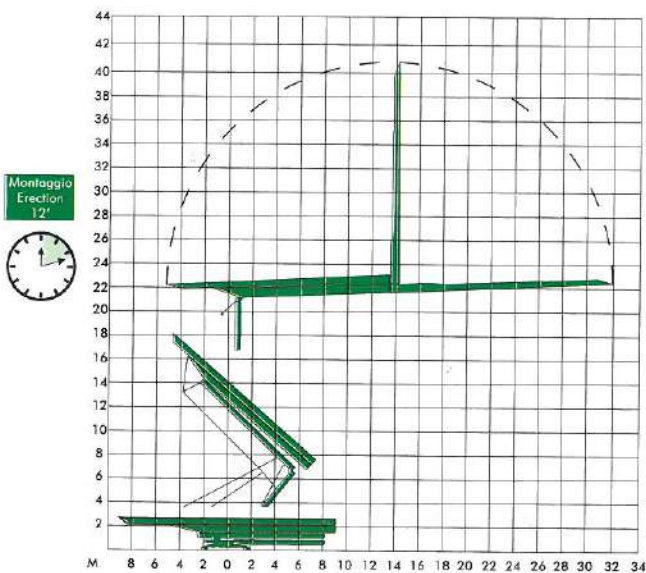


**A32 Super**

**DIAGRAMMI DI CARICO/LOAD DIAGRAMS**

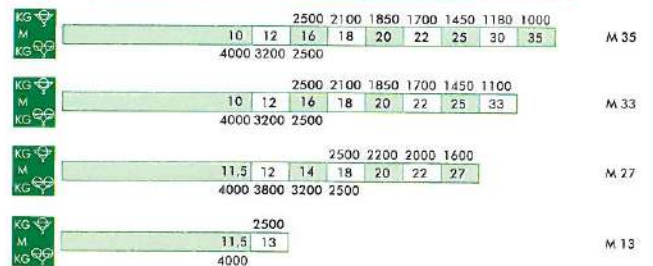


**MONTAGGIO/ERECTION**

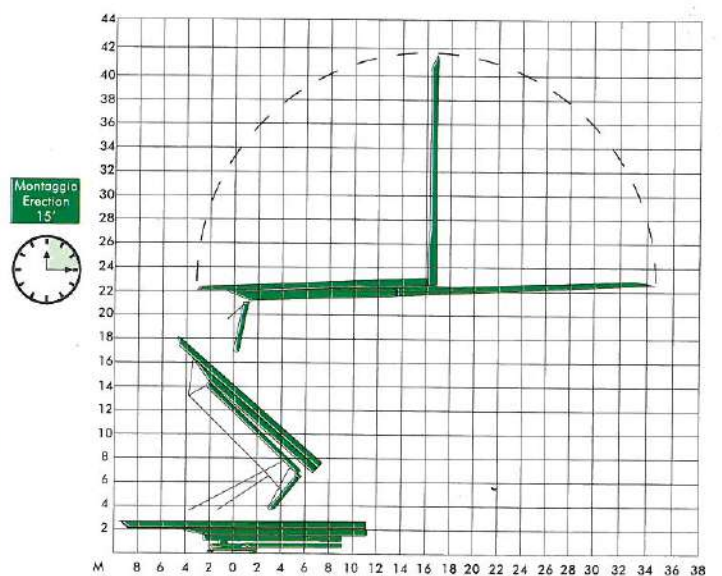


**A35 Super**

**DIAGRAMMI DI CARICO/LOAD DIAGRAMS**

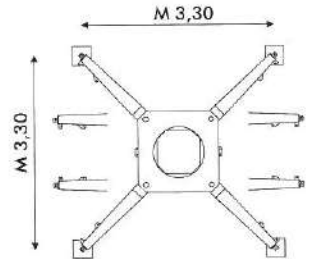
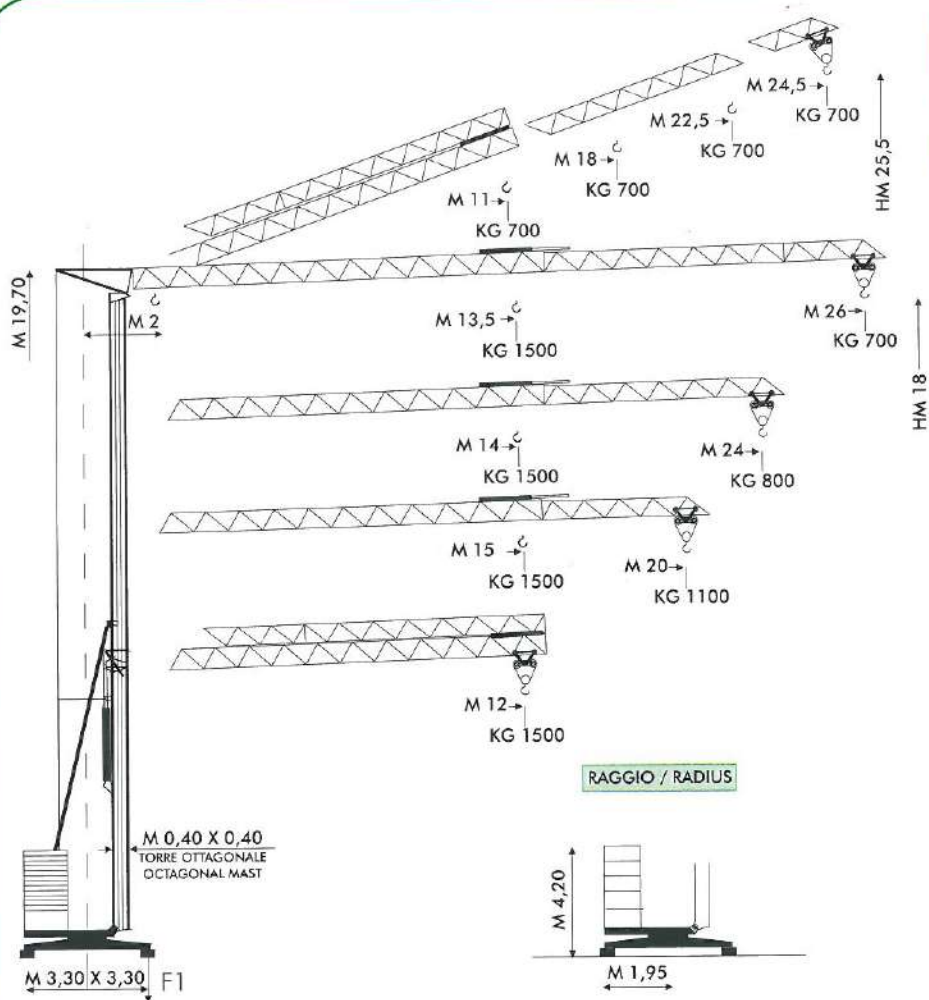


**MONTAGGIO/ERECTION**



# ALFAMATIC

MODELLO/TYPE A 26 *Paper*  
26-24-20

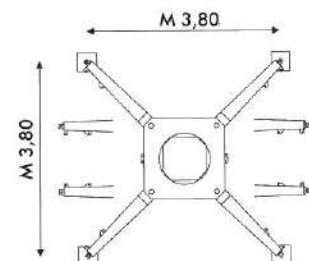
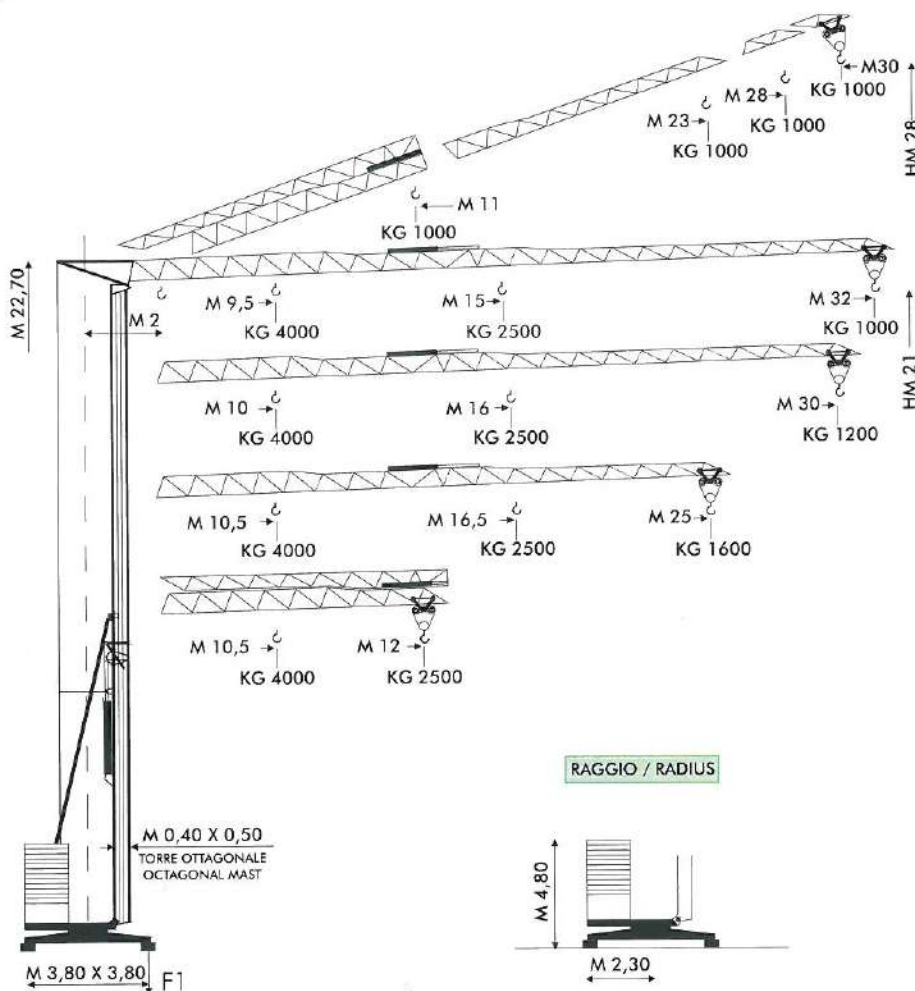


F1	● KG 12000	■ 11000
	~KG 8000/12000	

- IN ESERCIZIO / IN SERVICE
- FUORI ESERCIZIO / OUT OF SERVICE
- ⚙ PESO SENZA E CON ZAVORRA DI MONTAGGIO  
WEIGHT WITHOUT & WITH ASSEMBLY BALLAST

# ALFAMATIC

MODELLO/TYPE A 32 *Paper*  
32-30-25

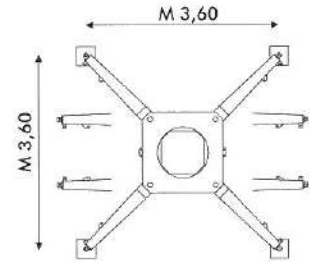
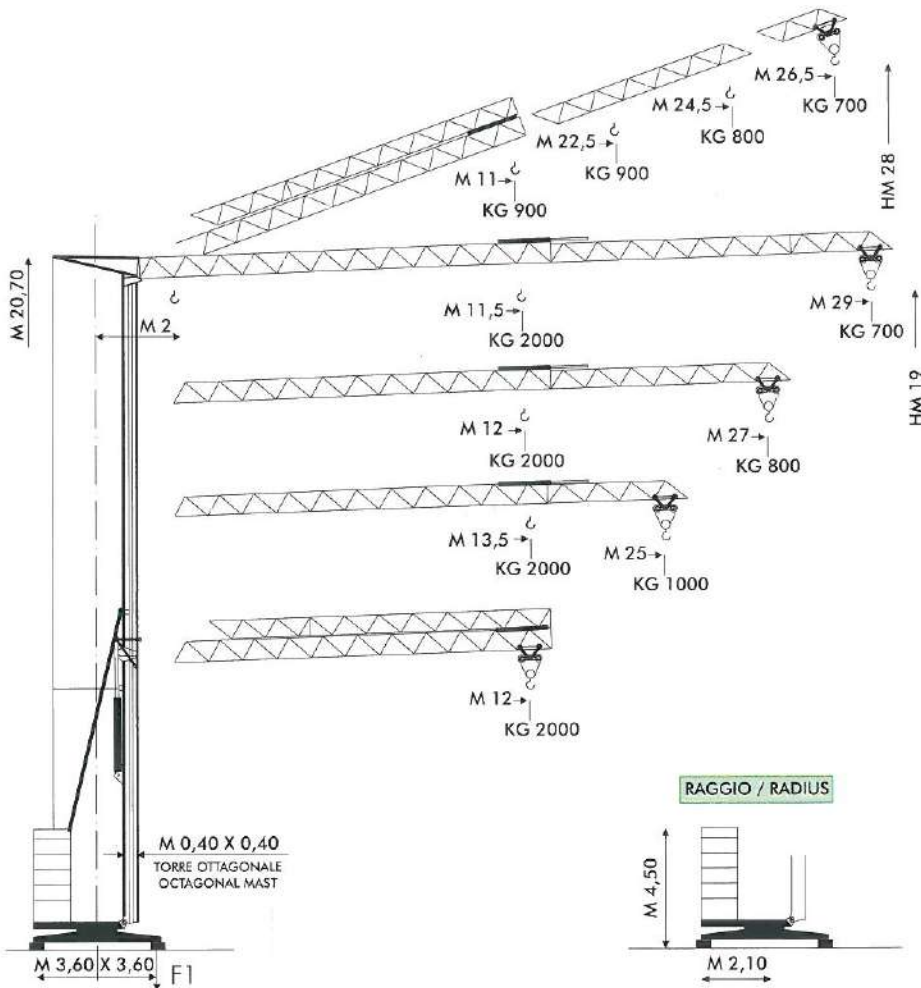


F1	● KG 21000	■ 15000
	~KG 12000/19000	

- IN ESERCIZIO / IN SERVICE
- FUORI ESERCIZIO / OUT OF SERVICE
- ⚙ PESO SENZA E CON ZAVORRA DI MONTAGGIO  
WEIGHT WITHOUT & WITH ASSEMBLY BALLAST

# ALFAMATIC

MODELLO/TYPE A 29 *Super*  
29-27-25

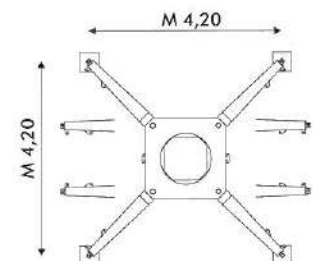
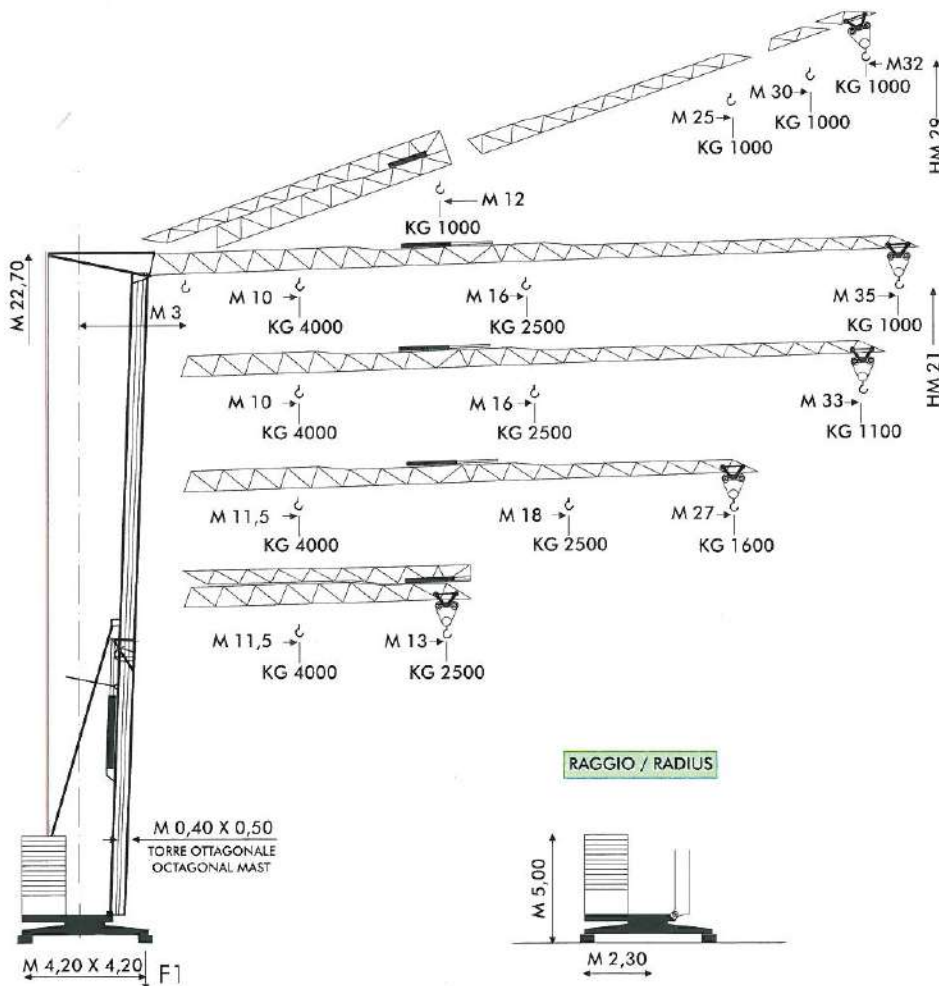


F1	● KG 14000	■ 11000
	-KG 9500/14500	

- IN ESERCIZIO / IN SERVICE
- FUORI ESERCIZIO / OUT OF SERVICE
- ⚙ PESO SENZA E CON ZAVORRA DI MONTAGGIO  
WEIGHT WITHOUT & WITH ASSEMBLY BALLAST

# ALFAMATIC

MODELLO/TYPE A 35 *Super*  
35-33-27



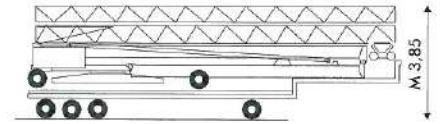
F1	● KG 24000	■ 16000
	-KG 13500/20500	

- IN ESERCIZIO / IN SERVICE
- FUORI ESERCIZIO / OUT OF SERVICE
- ⚙ PESO SENZA E CON ZAVORRA DI MONTAGGIO  
WEIGHT WITHOUT & WITH ASSEMBLY BALLAST

## MECCANISMI/MECHANISMS A 26 *Super* TRIFASE/THREE-PHASE

## TRASPORTO / TRANSPORT

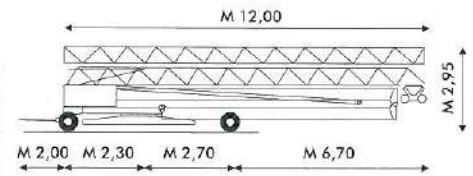
	HP	M/1'		HP	V	M/1'	KG	
	2/3 (MRC 86)	16/32		7,5/7,5/2 (109-3VS)	400	I	4,5	1500
						II	18	1500
						III	36	750
	2,5 (VF)	0 ▶ 0,9 (G/1'-REV/1')	MONTAGGIO ERECTION	8 ♦(MULTILIFT)		0 ▶ 45 (3/10/18 36/45)	1500/1500/1500 750/600	
				3	---	---	---	



Su camion / On truck

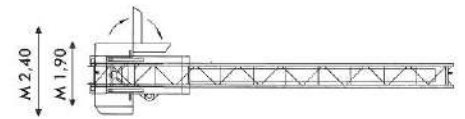
## A 26 *Super* MONO-TRIFASE/ONE & THREE-PHASE ♦

	HP	M/1'		HP	V	M/1'	KG	
	3 (MRC 86)	30		5 (109-3VS)	220	I	4	1200
						II	8	1200
						III	14	600
	2,5 (VF)	0 ▶ 0,9 (G/1'-REV/1')	MONTAGGIO ERECTION	5	400	I	4	1200
				3	---	II	15	1200
						III	30	700



Al treno / By haulage

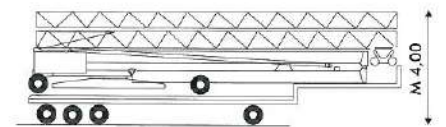
ALIMENTAZIONE/POWER SUPPLY V 400/220 ♦ /50HZ	MONTAGGIO IDRAULICO/HYDRAULIC ERECTION	BAR 110 ▶ 280
ASSALI TRAINO/TRANSPORT AXLES	RADIOCOMANDO/RADIOCONTROL	
ASSORBIMENTO/MAINS SUPPLY KW 10,8/5 ♦ /3 ♦	ZAVORRA DI MONTAGGIO/ASSEMBLY BALLAST	~KG 4300
BRACCIO IMPENNATO/LUFFING JIB	ZAVORRA MOBILE/MOBILE BALLAST	~KG 10000
FALCONE ZAVORRA/BALLAST DERRICK	♦ ZINCATURA TORRE E FRECCIA/TOWER AND JIB GALVANIZATION	



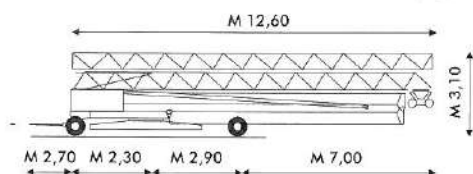
## MECCANISMI/MECHANISMS A 32 *Super*

## TRASPORTO / TRANSPORT

	HP	M/1'		HP	M/1'	KG		
	4/5 (MRC 110)	21/42		12/12/3 (116-3VS)	I	5	2500	
					II	20	2500	
					III	40	1000	
	3 (SECAS III)	0 ▶ 0,9 (G/1'-REV/1')				I	2,5	4000
						II	10	4000
						III	20	2000
MONTAGGIO ERECTION	4	---		12 ♦(MULTILIFT)		0 ▶ 50 (3/10/20 40/50)	2500/2500/2500 1000/800	
						0 ▶ 25 (1,5/5/10 20/25)	4000/4000/4000 2000/1600	

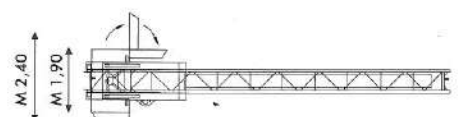


Su camion / On truck



Al treno / By haulage

ALIMENTAZIONE/POWER SUPPLY V 400/50 HZ	MONTAGGIO IDRAULICO/HYDRAULIC ERECTION	BAR 110 ▶ 280
ASSALI TRAINO/TRANSPORT AXLES	RADIOCOMANDO/RADIOCONTROL	
ASSORBIMENTO/MAINS SUPPLY KW 18/12 ♦	ZAVORRA DI MONTAGGIO/ASSEMBLY BALLAST	~KG 7000
BRACCIO IMPENNATO/LUFFING JIB	ZAVORRA MOBILE/MOBILE BALLAST	~KG 21 250
FALCONE ZAVORRA/BALLAST DERRICK	♦ ZINCATURA TORRE E FRECCIA/TOWER AND JIB GALVANIZATION	

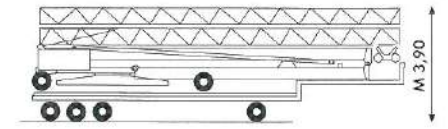


**MECCANISMI/MECHANISMS A 29** *Paper*

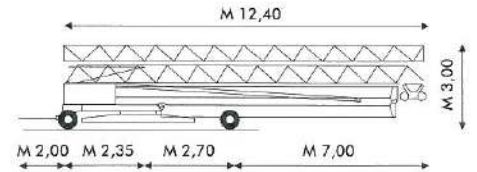
	HP	M/1'		HP	M/1'	KG
	3/4 (MRC110)	16/32		10/10/2,5 (115-3VS)	I 5	2000
	3 (VF)	0 ▶ 0,9 (G/1'-REV/1')			II 20	2000
MONTAGGIO ERECTION	3	---			III 40	1000
				10 ♦(MULTILIFT)	0 ▶ 50 (3/10/20 40/50)	2000/2000/2000 1000/800

ALIMENTAZIONE/POWER SUPPLY	V 400/50 HZ	MONTAGGIO IDRAULICO/HYDRAULIC ERECTION	BAR 110 ▶ 280
ASSALI TRAINO/TRANSPORT AXLES		RADIOCOMANDO/RADIOCONTROL	
ASSORBIMENTO/MAINS SUPPLY	KW 15/10	ZAVORRA DI MONTAGGIO/ASSEMBLY BALLAST	~KG 5000
BRACCIO IMPENNATO/LUFFING JIB		ZAVORRA MOBILE/MOBILE BALLAST	~KG 11500
FALCONE ZAVORRA/BALLAST DERRICK		ZINCATURA TORRE E FRECCIA/TOWER AND JIB GALVANIZATION	

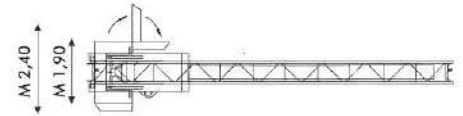
**TRASPORTO / TRANSPORT**



Su camion / On truck



Al treno / By haulage

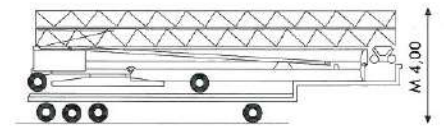


**MECCANISMI/MECHANISMS A 35** *Paper*

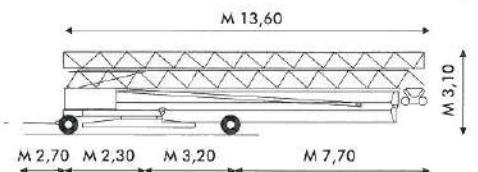
	HP	M/1'		HP	M/1'	KG
	4/5 (MRC110)	21/42		12/12/3 (116-3VS)	I 5	2500
	3,5 (SECAS III)	0 ▶ 0,9 (G/1'-REV/1')			II 20	2500
MONTAGGIO ERECTION	4	---			III 40	1000
				12 ♦(MULTILIFT)	0 ▶ 50 (3/10/20 40/50)	2500/2500/2500 1000/800
					0 ▶ 25 (1,5/5/10 20/25)	4000/4000/4000 2000/1600

ALIMENTAZIONE/POWER SUPPLY	V 400/50 HZ	MONTAGGIO IDRAULICO/HYDRAULIC ERECTION	BAR 110 ▶ 280
ASSALI TRAINO/TRANSPORT AXLES		RADIOCOMANDO/RADIOCONTROL	
ASSORBIMENTO/MAINS SUPPLY	KW 18/12	ZAVORRA DI MONTAGGIO/ASSEMBLY BALLAST	~KG 7000
BRACCIO IMPENNATO/LUFFING JIB		ZAVORRA MOBILE/MOBILE BALLAST	~KG 22500
FALCONE ZAVORRA/BALLAST DERRICK		ZINCATURA TORRE E FRECCIA/TOWER AND JIB GALVANIZATION	

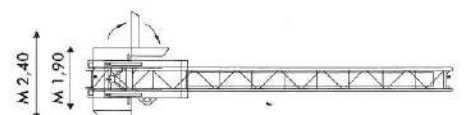
**TRASPORTO / TRANSPORT**

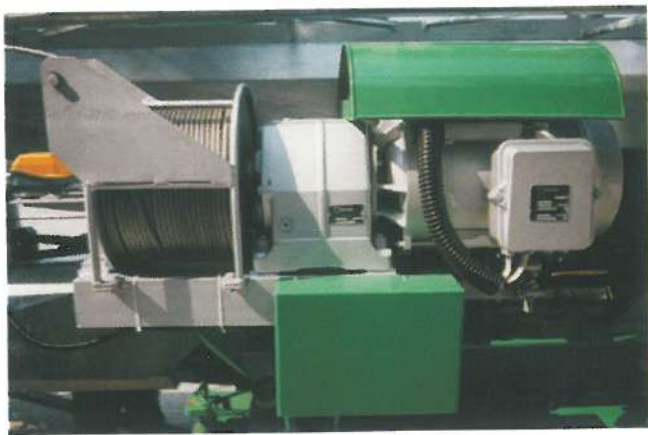


Su camion / On truck



Al treno / By haulage





LIVELLO ACUSTICO DEI MECCANISMI A NORME CEE  
SOUND LEVEL OF MECHANISMS AS PER EEC RULES



ARGANO DEL CARELLINO POSIZIONATO IN BASSO  
TROLLEY WINCH IN LOW POSITION



ROTAZIONE ELETTRONICA IN PRESA DIRETTA  
DIRECT DRIVE ELECTRONIC SLEWING



IDRAULICA CON ELETTROVALVOLE E COMANDO A DISTANZA  
HYDRAULIC DEVICE WITH ELECTRO-VALVES AND REMOTE-CONTROL



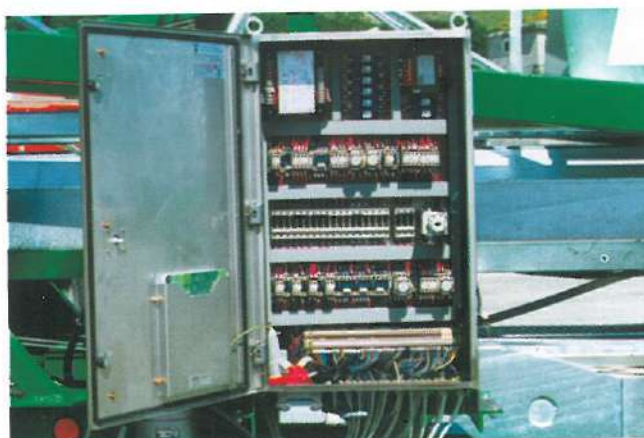
LIMITATORI DI CARICO E MOMENTO IN BASSO (DPR 547 E CIRC. 77)  
LOAD AND MOMENT LIMITING DEVICES IN LOW POSITION (AS PER RULES)



BOZZELLO PER KG. 2500 CON TIRO SEMPLICE  
HOOK BLOCK FOR KG. 2500 WITH 2/FALLS



COLLETTORE ELETTRICO SENZA LIMITATORE DI GIRI  
ELECTRICAL SLIP RING WITHOUT REVOLUTIONS LIMIT



QUADRO ELETTRICO INOX SECONDO NORME CEI 445  
STAINLESS ELECTRICAL BOARD AS PER CEI 445 RULES



CARRELLINO COMPLETO DI RUOTE LATERALI DI GUIDA  
TROLLEY COMPLETE OF LATERAL GUIDE WHEELS



INNESTO ASSALI CON ALTEZZA VARIABILE  
AXLES COUPLING WITH VARIABLE HEIGHT



ZAVORRA MOBILE IN BLOCCHI DA KG. 1000/1250  
ADDITIONAL BALLAST - BLOCK OF KG. 1000/1250



ZAVORRA MOBILE IN LASTRE DA KG. 1250  
ADDITIONAL BALLAST - SLAB BLOCK OF KG. 1250



ZAVORRA A BORDO CON INGOMBRO VARIABILE: M. 1,90 ▶ 2,40  
STANDARD BALLAST WITH VARIABLE WIDTH: M. 1,90 ▶ 2,40



TRASPORTO SU CAMION IN SAGOMA  
TRANSPORT ON TRUCK WITHIN GAUGE

**ALFAMATIC**

**A26-29-32-35 Super**



AGENTE/DEALER

ALFA SRL • 61015 NOVAFELTRIA (PU) • ITALY • PH. +39 0541 920096 • FAX 0541 921847  
www.alfagru.it - info@alfagru.it